

**NOT INVISIBLE II:
ASIAN PACIFIC ISLANDER
JUVENILE ARRESTS IN ALAMEDA COUNTY
(2001-2005)**

**Thao N. Le
Isami Arifuku
Judy Wallen**

**June 2006
Center on Culture, Immigration, and Youth Violence Prevention
Copyright by National Council on Crime and Delinquency, 2006**

This publication was supported by Grant U49 CE000743-01 from the Centers for Disease Control & Prevention. Its contents are solely the responsibility of the authors and do not necessarily represent the official views of the Centers for Disease Control & Prevention.

Table of Contents

Summary of Findings	1
I. Introduction.....	2
II. Methodology.....	3
III. API Juvenile Population in Alameda County	6
IV. API Arrests Compared to Other Racial Groups	7
V. Trends in Juvenile Arrests by API Ethnic Group	13
VI. Ethnic Representation of Arrest Rates	20
VII. Ethnic Representation in Arrests, Adjudications, and Institutional Placements	21
VIII. API Female Arrests	22
IX. API Male Arrests.....	29
X. API Recidivism	35
XI. Conclusion.....	37
XII. References.....	38

List of Tables

Table 1, API Youths Referred to Probation Between 2001 and 2005 Before and After Recategorization.....	4
Table 2, Total Youth Population (10-17 years old) by Racial Group 2001 and 2005.....	6
Table 3, Total Arrests and Corresponding Rates by Racial Group 2001 and 2005.....	7
Table 4, Juvenile Property Offenses by Racial Group 2001-2005.....	10
Table 5, Juvenile Offenses Against Persons by Racial Group 2001-2005.....	11
Table 6, Juvenile Drug Offenses by Racial Group 2001-2005.....	12
Table 7, Juvenile Probation Violations by Racial Group 2001-2005.....	12
Table 8, Juvenile Property Offenses by API Ethnic Group 2001-2005.....	17
Table 9, Juvenile Offenses Against Persons by API Ethnic Group 2001-2005.....	18
Table 10, Juvenile Drug Offenses by API Ethnic Group 2001-2005.....	19
Table 11, Arrest Rates by Race and API Ethnic Group 2001	20
Table 12, Juveniles by Population, Arrests, Adjudications, and Placements 2005.....	21
Table 13, Female Juvenile Property Offenses by API Ethnic Group 2001-2005.....	26
Table 14, Female Juvenile Offenses Against Persons by API Ethnic Group 2001-2005.....	27
Table 15, Female Juvenile Drug Offenses by API Ethnic Group 2001-2005.....	28
Table 16, Male Juvenile Property Offenses by API Ethnic Group 2001-2005.....	32
Table 17, Male Juvenile Offenses Against Persons by API Ethnic Group 2001-2005.....	33
Table 18, Male Juvenile Drug Offenses by API Ethnic Group 2001-2005.....	34
Table 19, 6-Month, 12-Month, and 24-Months Recidivism, Asian Pacific Islander Juvenile Arrest Population 2004.....	35
Table 20, 6-Month Recidivism by Offense Type for Asian Pacific Islander Juvenile Arrest Population 2004.....	36

List of Figures

Figure 1, Total Juvenile Arrests by Ethnicity.....	1
Figure 2, Total Juvenile Felony Arrests by Offense Type 2001-2005.....	8
Figure 3, Total Juvenile Misdemeanor/Probation Violation Arrests by Offense Type 2001-2005.....	9
Figure 4A, Juvenile Arrests by Asian Ethnic Group 2001-2005.....	13
Figure 4B, Pacific Islander Juvenile Arrests 2001-2005.....	14
Figure 5, Asian Pacific Islander Juvenile Felony Arrests by Offense Type 2001-2005.....	15
Figure 6, Asian Pacific Islander Juvenile Misdemeanor/Probation Violation Arrests by Offense Type 2001-2005.....	16
Figure 7, Female Juvenile Arrests by Ethnicity 2001-2005.....	22
Figure 8A, Female Juvenile Arrests by Asian Ethnic Group 2001-2005.....	23
Figure 8B, Female Pacific Islander Juvenile Arrests 2001-2005.....	23
Figure 9, Female Asian Pacific Islander Juvenile Felony Arrests by Offense Type 2001-2005.....	24
Figure 10, Female Asian Pacific Islander Juvenile Misdemeanor/Probation Violation Arrests by Offense Type 2001-2005.....	25
Figure 11, Male Juvenile Arrests by Ethnicity 2001-2005.....	29
Figure 12A, Male Juvenile Arrests by Asian Ethnic Group 2001-2005.....	30
Figure 12B, Male Pacific Islander Juvenile Arrests 2001-2005.....	30
Figure 13, Male Asian Pacific Islander Juvenile Felony Arrests by Offense Type 2001-2005.....	31
Figure 14, Male Asian Pacific Islander Juvenile Misdemeanor/Probation Violation Arrests by Offense Type 2001-2005.....	3

Asian Pacific Islander Juvenile Arrests in Alameda County Summary of Findings

- After an initial 15% decline from 2001-2002, API arrests fluctuated until 2005, with the 2005 level equal to the 2002 level.
- During this period the API arrest rate fell 25% from 22 per 1,000 to 17 per 1,000.
- By 2005, APIs accounted for approximately 8% of Alameda County juvenile arrests, even though APIs comprised approximately 25% of Alameda County's juvenile population.
- Arrest rates (number of arrests per thousand) were highest for Blacks (162), followed by Samoans (153), Laotians (95), Hawaiians (67), Cambodians (56), and Vietnamese (49).
- Southeast Asians (Vietnamese, Laotian, Cambodian) were only around one-sixth of the Alameda County API population, yet were responsible for around one-third of the arrests and nearly one-half of adjudications and institutional placements.
- Property was the most common felony offense type for API males and females.
- Most API offense categories followed a similar pattern to the overall API offenses during the 2001-2005 period (declined from 2001-2002, then fluctuated minimally thereafter), although API misdemeanor properties showed more significant declines while API misdemeanor drug offenses rose.
- Females comprised 22% of arrests in 2005 and 2001, compared with 10.5% in 1991. With the exception of a spike in 2004, overall female arrests remained fairly stable during this 2001-2005 period.
- Blacks and Hispanics are comprising a greater percentage of the total female arrests, while Whites are comprising a lower percentage. Asians comprised 6%-8% in 2001-2005, which is around the same as the percentage in the mid- to late 1990s.
- Female arrests declined from 2001-2004 for Whites only, and rose from 2001-2004 for Blacks, Hispanics, and APIs. In 2004, female arrests for APIs and Hispanics reached levels close to their mid-1990s peaks, while Whites and Blacks were around 10% below their 1990s peak levels. In 2005, female arrests for each ethnicity declined, with APIs and Whites falling below 2001 levels.
- Female API misdemeanor property offenses declined from 2001-2005, while most other offense categories followed the overall female pattern (rose from 2001-2004 after then declining in 2005).
- Total male arrests fluctuated during this period. Male arrests as a percentage of total declined from 89% in 1991 to 78% in 2001 and 2005. Black and Hispanic male arrests as a percentage of total have increased slightly in the 2001-2005 period (from 47% to 49%, and from 20% to 24%), while Whites have declined from 19% to 14% and Asians have declined from 10% to 8%.
- For 2001-2005 White male arrests have been declining, while Hispanic arrests have been increasing. Asian male arrests have not changed much since 2002, and total Black male arrests have fluctuated during this period.
- Recidivism rates for Cambodians, Laotians, and Pacific Islanders were higher than the overall API recidivism rate.

I. Introduction

Within the Asian Pacific Islander (API) racial group, there is great diversity, incorporating well over 50 different ethnic groups. Most official statistics do not disaggregate the Asian racial group into various ethnic groups, and there are wide inconsistencies in the ways different systems (health, education, court, etc.) report data by racial/ethnic group. As such, reporting regarding API juvenile crime involvement may be distorted, skewed, and incomplete.

The purpose of this report is to update the Not Invisible Report (Le et al., 2001) that presented juvenile offense data in Alameda County, California between 1990-2000. Similar to the 2001 report, this report attempts to disaggregate the data by specific ethnic groups as much as possible, presenting information for the period 2001-2005. The data contained in this report are from secondary analyses, that is, analyses of data that were originally collected by another source, the Alameda Juvenile Probation Department. What differentiates these analyses is that many of the “Other” and “Other Asian” youth categorizations were reclassified into specific ethnic groups using the youth’s last name. These analyses result in a better understanding of the subtle differences in arrests among various API ethnic groups (Le et al., 2001).

II. Methodology

This report is based on data that were collected by the Alameda County Probation Department. The data reflect all juvenile arrest referrals to probation (i.e., official court referral) in the county of Alameda from 2001-2005 and are presented in two ways: number of arrests which are reports of events, not unduplicated individuals, and number of unique youths which are reports of unique youths for the given year. For the unique youth determination, the most serious offense the youth committed for that year is counted. So, if a youth was arrested for five different offenses for a given year, s/he was counted only once with the most serious offense as the event included. Number of arrests is a rough indication of the extent and nature of juvenile crime (not necessarily number of crimes committed since there are some events which do not come to the attention of law enforcement) and/or law enforcement practices, while unique youth reflects the number of individuals involved in delinquent activity or interfacing with juvenile justice agencies. This report primarily focuses on the number of arrests; the number of unique youths is considered in calculating rates and/or recidivism measures.

The population aged 10-17 represents the “at-risk” population and is used as the baseline for defining proportional representation. “Race” and “racial group” as used in this report reflect the socially created categories commonly used to differentiate groups of people in the U.S. (such as “Asian,” “American Indian,” “Black,” “Hispanic,” “White,” and “Other”). These are the commonly used categories to collect statistics. In contrast, “ethnicity” and “ethnic group” more specifically identify a people’s nationality, place of ancestor’s origin, and/or cultural background (such as “Chinese,” “Japanese,” “Korean,” etc.).

A. Race and API Ethnicity

Many of the youths who were categorized in the race/ethnic field as “Other Asian” and “Other” can be classified into a specific race/ethnic group by examining the youth’s last name. A database of common Asian Pacific Islander surnames and the race/ethnic group that coincides with that surname was developed for the purpose of this project. Many Asian surnames can be used to identify multiple races/ethnicities, but our database reflected the most commonly used categorization of race or ethnicity corresponding to a given surname. The names in the database were collected from various sources including five Internet sites and two resource manuals (Rhoda L. Agin et al., 1992; Louie, 1998), then compiled into one central database. Names were also added to the database by searching the given data set for names already categorized as a specific Asian race/ethnicity and cross-checking with names in the database. Commonly used names not included in the database were added and continuously updated with new data sets.

Table 1 below shows the effect of reclassification of API youths in the Alameda County Probation database for years 2001-2005. Before reclassification, “Other Asian” comprised 78 percent of the API youth population; after reclassification, “Other Asian” comprised 13 percent of the API youth population.

As a collective group, “Asian” and “API” are used interchangeably throughout the report except where noted.

Table 1
Alameda County
API Youths Referred to Probation Between 2001 and 2005
Before and After Recategorization

	Before	After
Other Asian	1179	278
Chinese	36	405
Cambodian	15	170
Filipino	138	413
Japanese	1	22
Korean	11	74
Laotian	3	140
Pacific Islander	41	44
Samoan	17	119
Hawaiian	7	7
Vietnamese	50	396
Asian Indian	11	142
Total	1509	2210
Other	2015	1314
Total	3524	3524

Source: Alameda Juvenile Probation Department

This method allowed for additional cases to be included in the analysis of API arrests in Alameda County. The total number of API youths engaged in the Alameda juvenile justice system increased as youths with Asian surnames were reclassified from the general “Other” racial group and “Other Asian” category into specific API ethnic groups (which accounts for the increase in the total number of unique Asian youths after recategorization shown in Table 1). This recategorization allows for clearer establishment of trends and conclusions regarding API juveniles’ arrests in Alameda County.

There are however several limitations to this method that must be considered. One major consideration is that it does not account for multi-ethnicity or the nuances within particular ethnic groups (e.g., ethnic Chinese in Vietnamese versus mainland Chinese). Also, youths with API surnames may not necessarily be of API descent (e.g., adoptions), or API youths missed because of common shared surnames with other ethnic groups (e.g., Filipinos having some surnames similar to Spanish/Hispanic group). Considering that there is relatively scant information on APIs within the juvenile justice system, the benefits from this recategorization and resulting analysis outweigh the above-noted limitations.

B. Criminal Offenses

Offenses were categorized based on the state of California’s Penal Code. The following list defines each type of criminal offense included in this study:

Property Offenses:

Felony: arson, burglary, theft, motor vehicle theft, forgery, and bookmaking.

Misdemeanor: petty theft, other theft, vandalism, hit and run property, forgery, trespassing, malicious mischief, and joyriding.

Offenses against Persons:

Felony: homicide, vehicular or non-vehicular manslaughter, rape, lewd or lascivious behavior, other sexual violations, robbery, assault, kidnapping, and hit and run.

Misdemeanor: minor assault, lewd or lascivious behavior, annoying children.

Drug Offenses:

Felony: possession or selling of dangerous drugs/narcotics, other felony drug violations, and driving under the influence.

Misdemeanor: minor possession or selling of drugs/narcotics, other drug law violations, minor driving under the influence, and liquor law violations.

Weapons Offenses:

Felony: weapons.

Misdemeanor: minor weapons.

Other Offenses:

Felony: escape and other.

Misdemeanor: obscene matter, indecent exposure, disorderly conduct, disturbing peace, contributing to delinquency of minor, gambling, drunk, prostitution, traffic, city/county ordinances, and other.

Probation Violations/Warrants/Parole Violations:

Probation violations, warrants, and technical violations.

C. Scope of Study

As stated in the introduction, the focus of this study is Asian Pacific Islander Juvenile arrests in Alameda County. Juveniles, or the youth population, are used interchangeably herein, and are defined as people between the ages of 10 to 17. This report focuses on a specific age group (youths age 10 to 17), specific racial and ethnic groups (Asian Pacific Islanders), a specific region (Alameda County), and a specific activity (arrests). Because the number of cases analyzed is restricted within this relatively small scope of study, the tables and figures presented in this report may exaggerate small fluctuations. Therefore, the emphasis of this study is on overall trends during the time period between 2001 and 2005.

III. API Juvenile Population in Alameda County

The Alameda County youth population increased slightly at 4% from 2001 to 2005. API now comprises the second largest youth population of any racial group, just barely surpassing White youth which is slowly decreasing. API youth (along with Hispanic youth at 29%) are continuing their rapid rates of growth during this period at 13% increase.

Table 2
Alameda County
Total Youth Population (10-17 years old) by Racial Group
2001 and 2005

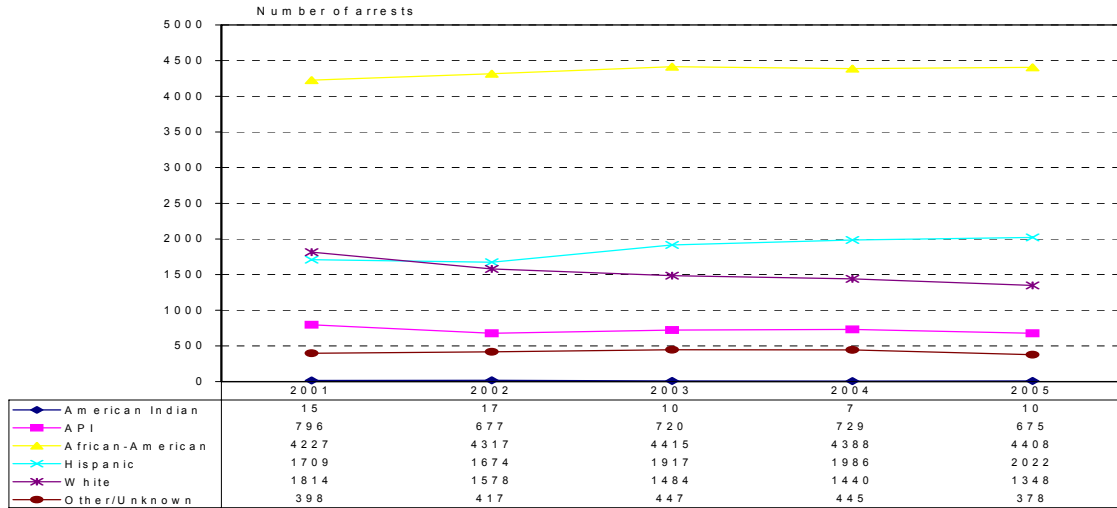
Ethnicity	2001	% Total	2005	% Total	% Change
Amer. Indian	1,037	1%	1,279	1%	23%
API	35,563	23%	40,256	25%	13%
Black	26,127	17%	25,916	16%	-1%
Hispanic	39,047	25%	46,487	29%	19%
White	45,120	29%	37,950	24%	-16%
Multi-race	7,448	5%	8,436	5%	13%
Total	154,342	100%	160,324	100%	4%

Source: California Department of Finance

IV. API Arrests Compared to Other Racial Groups

This section focuses on juvenile arrest trends for APIs compared to other racial groups in Alameda County from 2001 to 2005.

Figure 1
Alameda County
Total Juvenile Arrests by Ethnicity
2001-2005



Source: Alameda County Juvenile Probation Department

Arrests for Alameda County peaked in 1996 (see Le et al., 2001) and have declined dramatically from that maximum. Although the total arrests from 2001-2005 were less than the previous decade, there is so far no clearly discernible trend between 2001 and 2005, as total arrests have remained fairly flat. From 2001-2005 within each racial group, there have been declines from the peak period of the mid-1990s, yet Hispanics seem to be trending upward again, while Whites seem to be continuing to trend downward. The 2001-2005 trends for African-Americans and APIs are less clear. African-American arrests were rising between 2001 and 2003, but have remained flat from 2003 to 2005. API arrests declined 15% in 2002 and then fluctuated from 2002-2005.

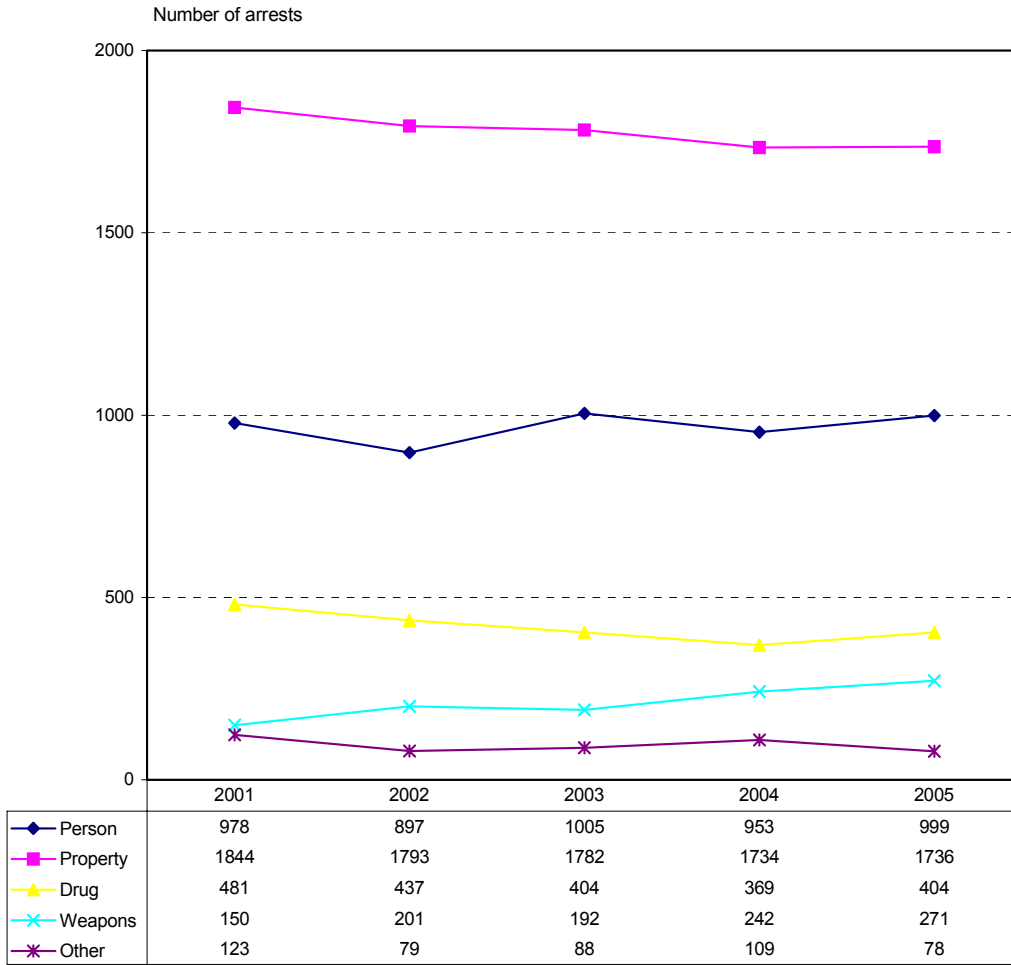
Consistent with national trends that showed juvenile arrest rates reaching a peak in the mid-1990s, and thereafter falling (Snyder, 2005), arrest rates for Alameda County from 2001-2005 are significantly less than they were in the early 1990s (from 75.4 per 1,000 in 1991 to 55.1 in 2005). Asians/APIs have the lowest arrest rate at 16.8 arrests per 1,000 in 2005. Asians/APIs comprise around 25% of the Alameda youth population yet only around 8% of total arrests. Comparing 2001 vs. 2005 arrests, overall arrest rates have fallen slightly. African-American arrest rates rose slightly, while White and API arrest rates have fallen. On the other hand, Hispanic arrests rates have remained fairly stable.

Table 3
Alameda County
Total Arrests and Corresponding Rates by Racial Group
2001 and 2005

Ethnicity	# Arrests	2001 Arrest Rate		2005 Arrest Rate		
		Youths 10-17	Rate (per 1000)	Youths 10-17	Rate (per 1000)	
API	794	35,563	22.3	675	40,256	16.8
Black	4,222	26,127	161.6	4,408	25,916	170.1
Hispanic	1,709	39,047	43.8	2,022	46,487	43.5
White	1,814	45,120	40.2	1,348	37,950	35.5
Total	8,954	154,342	58.0	8,841	160,324	55.1

Source: Alameda County Juvenile Probation Department; California Department of Finance

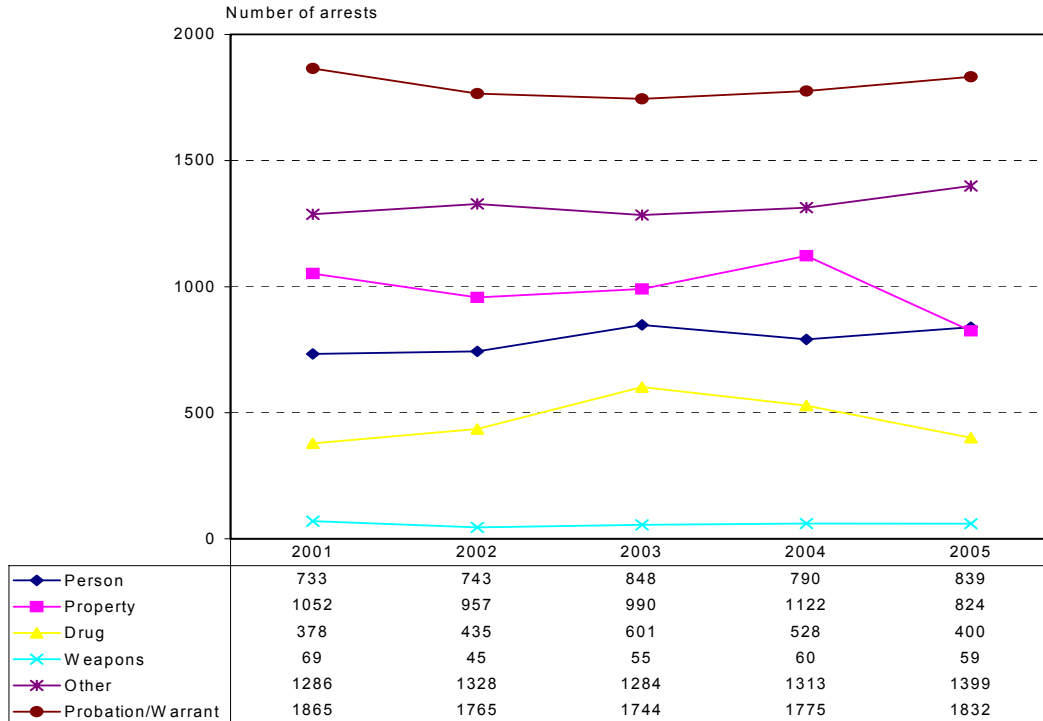
Figure 2
Alameda County
Total Juvenile Felony Arrests by Offense Type
2001-2005



Source: Alameda County Juvenile Probation Department

All felony and misdemeanor arrest categories have declined from the peak in the mid-1990s. The most significant declines can be seen in property arrests. Between 2001 and 2005, property arrests comprised most of the felony arrests (a little more than half), followed by crimes against persons (26%-29%), and drugs arrests (11%-13%). A decline in felony property and drug arrests has occurred during this period, while weapon arrests have risen. No trend is readily apparent for total felony arrests.

Figure 3
Alameda County
Total Juvenile Misdemeanor and Probation Violation Arrests
by Offense Type
2001 and 2005



Source: Alameda County Juvenile Probation Department

Most of the misdemeanor arrests were other arrests, followed by property, and then person arrests. Probation violations/warrants were included in this category even though probation violations may involve felony or misdemeanor incidents. Between 2001 and 2005, there were a lot of fluctuations in misdemeanor offenses. Misdemeanor person arrests have risen somewhat, while some decline can be seen in misdemeanor property offenses.

A. Property Offenses

Table 4
Alameda County
Juvenile Property Offenses by Racial Group
2001 - 2005

Year	Total No.	Felony Property											
		Am. Indian		API		Black		Hispanic		White		Other	
		No.	%	No.	%	No.	%	No.	%	No.	%	No.	%
2001	1844	1	0.1%	237	12.9%	879	47.7%	332	18.0%	319	17.3%	76	4.1%
2002	1793	2	0.1%	187	10.4%	888	49.5%	346	19.3%	308	17.2%	62	3.5%
2003	1782	1	0.1%	215	12.1%	846	47.5%	354	19.9%	288	16.2%	78	4.4%
2004	1734	1	0.1%	193	11.1%	837	48.3%	400	23.1%	227	13.1%	76	4.4%
2005	1736	4	0.2%	186	10.7%	799	46.0%	426	24.5%	264	15.2%	57	3.3%
% Change	-6%	300%		-22%		-9%		28%		-17%		-25%	

Year	Total No.	Misdemeanor Property											
		Am. Indian		API		Black		Hispanic		White		Other	
		No.	%	No.	%	No.	%	No.	%	No.	%	No.	%
2001	1052	0	0.0%	120	11.4%	368	35.0%	196	18.6%	317	30.1%	51	4.8%
2002	957	1	0.1%	91	9.5%	408	42.6%	164	17.1%	242	25.3%	51	5.3%
2003	990	1	0.1%	75	7.6%	452	45.7%	202	20.4%	208	21.0%	52	5.3%
2004	1122	1	0.1%	113	10.1%	467	41.6%	208	18.5%	277	24.7%	56	5.0%
2005	824	0	0.0%	64	7.8%	352	42.7%	189	22.9%	177	21.5%	42	5.1%
% Change	-22%	-		-47%		-4%		-4%		-44%		-18%	

Source: Alameda Juvenile Probation Department

APIs comprise only a little more than 10% of all felony property offenses (even though APIs comprise over 20% of the population). Whites comprise only around 15% of the felony property offenses while comprising between 25%-30% of the population. Blacks comprise nearly half of felony property offenses while comprising less than 20% of the youth population. Hispanic felony property arrests (between 20% and 25%) are closer to their proportion of the youth population (around 25%). Felony and misdemeanor property arrests have fallen from the prior decade and are continuing to decline at least somewhat for all ethnic groups (overall felonies declining 6% and misdemeanors 22%), with the exception of felonies for Hispanic youth.

B. Crimes Against Persons

Table 5
Alameda County
Juvenile Offenses Against Persons by Racial Group
2001 - 2005

Felony Against Persons													
Year	Total No.	Am. Indian		API		Black		Hispanic		White		Other	
		No.	%	No.	%	No.	%	No.	%	No.	%	No.	%
2001	978	3	0.3%	76	7.8%	567	58.0%	184	18.8%	107	10.9%	41	4.2%
2002	897	3	0.3%	69	7.7%	532	59.3%	146	16.3%	103	11.5%	44	4.9%
2003	1005	4	0.4%	59	5.9%	639	63.6%	168	16.7%	101	10.0%	34	3.4%
2004	953	2	0.2%	54	5.7%	560	58.8%	198	20.8%	101	10.6%	38	4.0%
2005	999	0	0.0%	66	6.6%	611	61.2%	194	19.4%	95	9.5%	33	3.3%
% Change	2%	-100%		-13%		8%		5%		-11%		-20%	

Misdemeanor Against Persons													
Year	Total No.	Am. Indian		API		Black		Hispanic		White		Other	
		No.	%	No.	%	No.	%	No.	%	No.	%	No.	%
2001	733	1	0.1%	62	8.5%	344	46.9%	148	20.2%	145	19.8%	33	4.5%
2002	743	0	0.0%	46	6.2%	383	51.5%	142	19.1%	143	19.2%	29	3.9%
2003	848	1	0.1%	57	6.7%	426	50.2%	183	21.6%	152	17.9%	29	3.4%
2004	790	0	0.0%	46	5.8%	396	50.1%	173	21.9%	138	17.5%	37	4.7%
2005	839	2	0.2%	44	5.2%	408	48.6%	227	27.1%	123	14.7%	35	4.2%
% Change	14%	100%		-29%		19%		53%		-15%		6%	

Source: Alameda Juvenile Probation Department

APIs comprise even less of felony person offenses (6-8%) than property offenses as do Whites (10%), while Blacks comprise more (close to 60%). The percentages are similar to the previous decade. The arrest numbers have fallen from the peak numbers in the mid-1990s for all ethnic groups, although it is only for APIs and Whites that person arrest (both felony and misdemeanor) numbers have continued to trend downward during the 2001-2005 period. Hispanic and Black person offenders rose during this period; misdemeanor offenses rose significantly more than felonies for both these racial groups. Overall, felonies rose slightly at 2% and misdemeanors at 14%.

C. Drug Offenses

**Table 6
Alameda County
Juvenile Drug Offenses by Racial Group
2001 - 2005**

Year	Total No.	Felony Drug											
		Am. Indian		API		Black		Hispanic		White		Other	
		No.	%	No.	%	No.	%	No.	%	No.	%	No.	%
2001	481	1	0.2%	35	7.3%	296	61.5%	57	11.9%	84	17.5%	8	1.7%
2002	437	0	0.0%	21	4.8%	278	63.6%	66	15.1%	65	14.9%	7	1.6%
2003	404	0	0.0%	28	6.9%	236	58.4%	75	18.6%	49	12.1%	16	4.0%
2004	369	0	0.0%	23	6.2%	218	59.1%	57	15.4%	60	16.3%	11	3.0%
2005	404	2	0.5%	26	6.4%	231	57.2%	56	13.9%	71	17.6%	18	4.5%
% Change	-16%	100%		-26%		-22%		-2%		-15%		125%	

Year	Total No.	Misdemeanor Drug											
		Am. Indian		API		Black		Hispanic		White		Other	
		No.	%	No.	%	No.	%	No.	%	No.	%	No.	%
2001	378	0	0.0%	25	6.6%	74	19.6%	91	24.1%	168	44.4%	20	5.3%
2002	435	1	0.2%	35	8.0%	100	23.0%	106	24.4%	168	38.6%	25	5.7%
2003	601	0	0.0%	53	8.8%	121	20.1%	163	27.1%	228	37.9%	36	6.0%
2004	528	1	0.2%	65	12.3%	107	20.3%	135	25.6%	197	37.3%	23	4.4%
2005	400	1	0.3%	28	7.0%	104	26.0%	93	23.3%	160	40.0%	14	3.5%
% Change	6%	-		12%		41%		2%		-5%		-30%	

Source: Alameda Juvenile Probation Department

The percentages across race for felony drug offenses are similar to felony property offenses, although the percentages for White felony drug offenses are slightly higher. The percentage of misdemeanor drug offenses for Whites and Hispanics is a lot higher than for misdemeanor person offenses; for Blacks the percentage is lower. Most groups have shown declines in drug offenses since the 1990s, with the exception of drug felonies for Whites and APIs. From 2001-2005, some declines can be seen for felony drug offenses (overall 16%), while increases are occurring in misdemeanor drug offenses for APIs and African-Americans.

D. Probation/Parole Violations and Warrants

**Table 7
Alameda County
Juvenile Probation/Parole Violations and Warrants by Racial Group
2001 - 2005**

Year	Total No.	Probation/Parole Violations and Warrants											
		Am. Indian		API		Black		Hispanic		White		Other	
		No.	%	No.	%	No.	%	No.	%	No.	%	No.	%
2001	1865	7	0.4%	103	5.5%	1075	57.6%	360	19.3%	285	15.3%	35	1.9%
2002	1765	5	0.3%	87	4.9%	1125	63.7%	292	16.5%	199	11.3%	57	3.2%
2003	1744	1	0.1%	99	5.7%	1065	61.1%	351	20.1%	172	9.9%	56	3.2%
2004	1775	1	0.1%	91	5.1%	1114	62.8%	351	19.8%	153	8.6%	65	3.7%
2005	1832	0	0.0%	108	5.9%	1136	62.0%	378	20.6%	161	8.8%	49	2.7%
% Change	-2%	-100%		5%		6%		5%		-44%		40%	

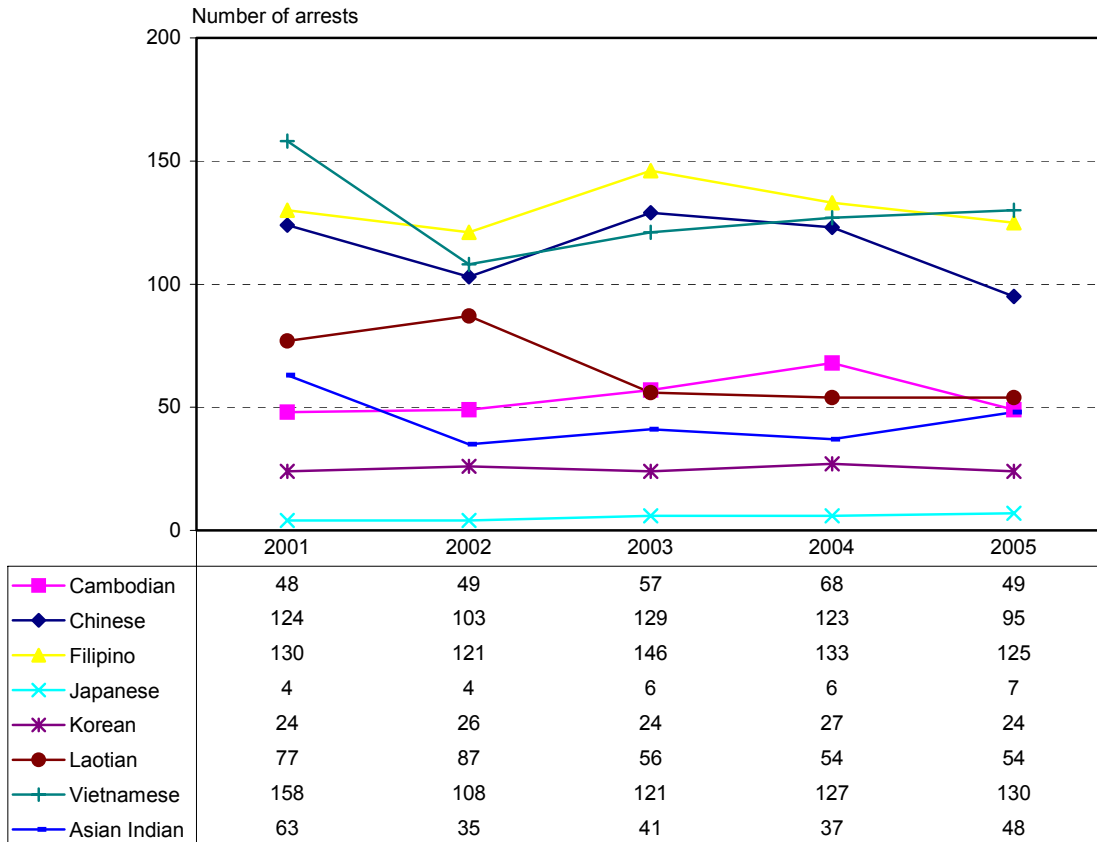
Source: Alameda Juvenile Probation Department

Blacks comprise the majority of probation violation/warrant arrests, hovering around 60%, followed by Hispanics at around 20%, Whites (around 10%), and API (around 5%). The percentage of Whites is dropping, while other racial groups are not changing much in terms of percentage of total arrests. There are slight increases for all racial groups except for Whites, in which probation violation/warrant arrests have dropped a notable 44% during this period.

V. Trends in Juvenile Arrests by API Ethnic Group

This section reviews juvenile arrest trends for the 11 major represented API ethnic groups in Alameda County from 2001-2005.

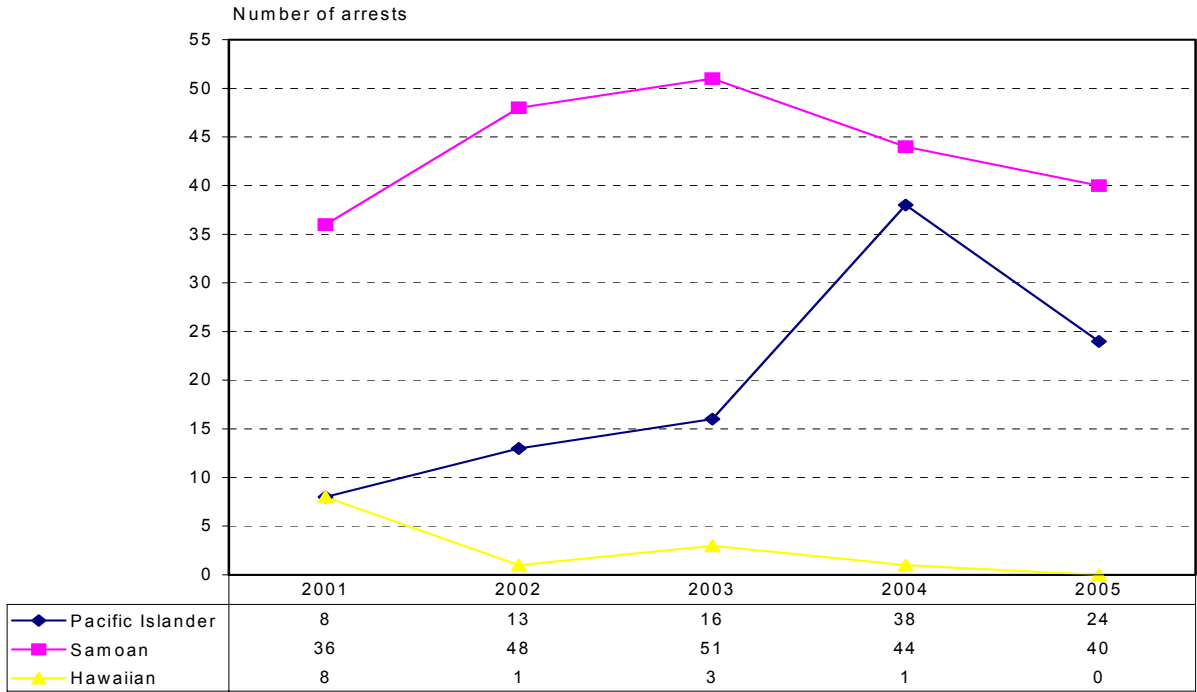
Figure 4A
Alameda County
Juvenile Arrests by Asian Ethnic Group
2001 - 2005



Source: Alameda County Juvenile Probation Department

Figure 4A and 4B show the trends of the different Asian ethnicities. As with most every other category, arrests in the early 2000s are certainly down from the peak in the previous decade, with the possible exception of Cambodians in which 2004 arrests surpassed the 1996 peak of 62 arrests. From 2001-2005, fluctuations within API ethnic groups are too great to discern any obvious trends, with the possible exception for Laotians in which arrests are more clearly declining, and Pacific Islanders in which arrests appear to be rising (except Hawaiians).

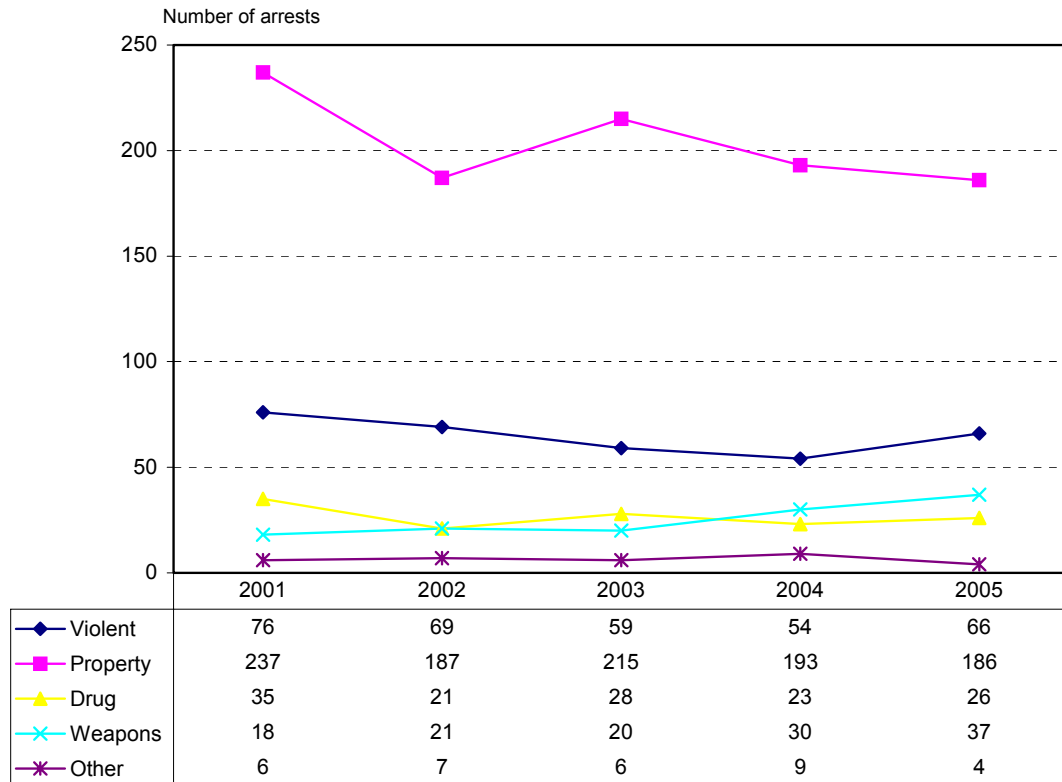
**Figure 4B
Alameda County
Juvenile Arrests by Asian Ethnic Group
2001 – 2005**



Source: Alameda County Juvenile Probation Department

API felony and misdemeanor person, property, and weapon offenses between 2001-2005 are down from their mid-1990s peaks. After 2001-2002, when overall felonies declined 18%, total API felonies did not change much from 2002-2005. Felony person offenses declined from 2001 until 2004 and then rose in 2005. Felony property offenses declined from 2001-2002 and then fluctuated after that. Weapon offenses have increased during this period. From 2001 to 2002, drug offenses declined to its lowest level during this period, and then fluctuated from 2002 to 2005.

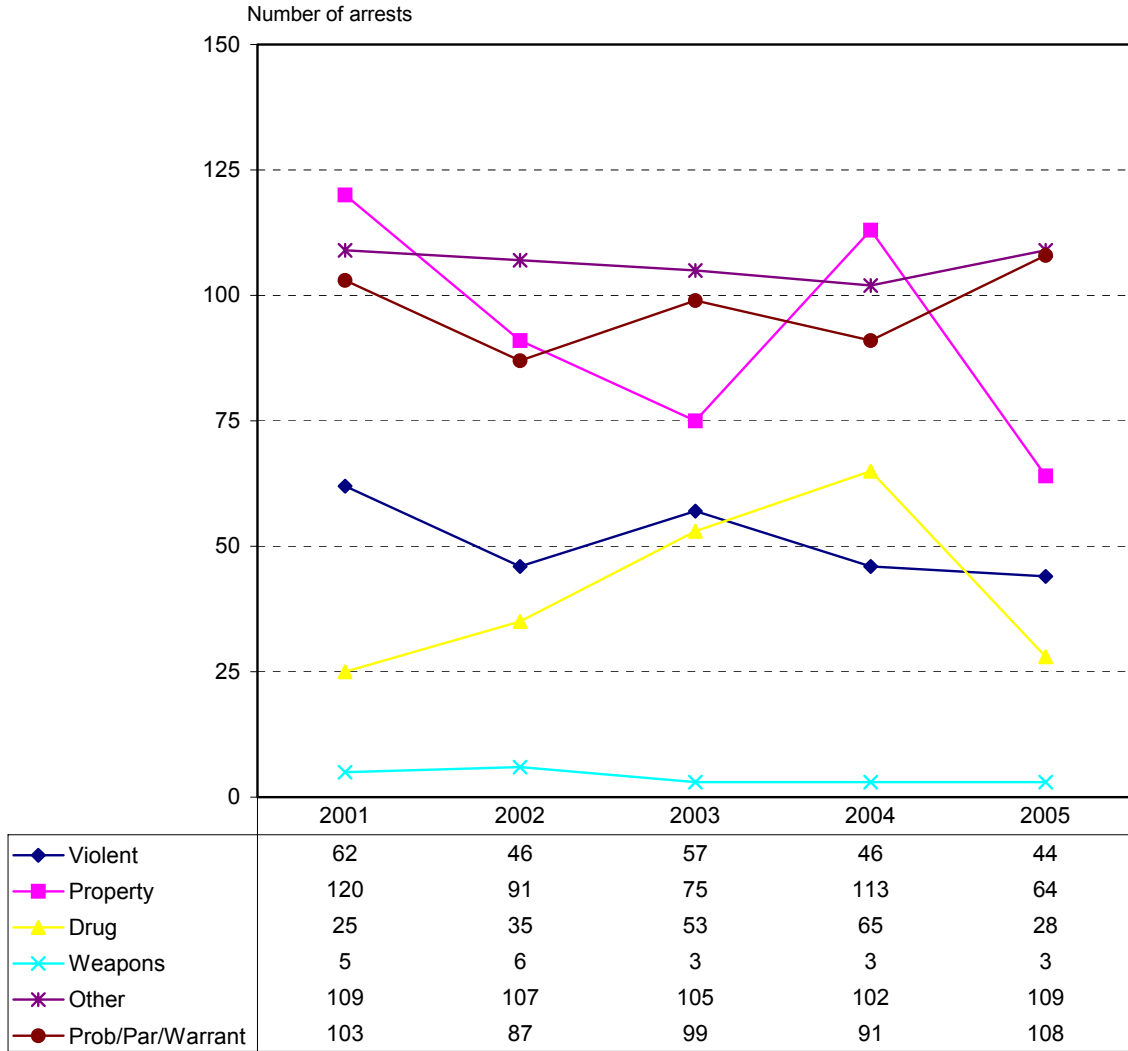
Figure 5
Alameda County
Asian/Pacific Islander Juvenile Felony Arrests by Offense Type
2001 – 2005



Source: Alameda County Juvenile Probation Department

Most misdemeanor offenses fluctuated during this time period. API property misdemeanors declined in every year except for 2004. API drug misdemeanors rose in every year except for 2005, negating the previous years' rise.

Figure 6
Alameda County
Asian/Pacific Islander Juvenile Misdemeanor and Probation Violation and Warrant Arrests
by Offense Type
2001 – 2005



Source: Alameda County Juvenile Probation Department

A. Property Offenses

Table 8
Alameda County
Juvenile Property Offenses by API Ethnic Group
2001 – 2005

Felony Property																									
Year	Total No.	Asian Indian		Cambodian		Chinese		Filipino		Hawaiian		Japanese		Korean		Laotian		Pacific Islander		Samoan		Vietnamese		Other API	
		No.	%	No.	%	No.	%	No.	%	No.	%	No.	%	No.	%	No.	%	No.	%	No.	%	No.	%	No.	%
2001	237	8	3.4	12	5.1	39	16.5	31	13.1	0	0.0	1	0.4	6	2.5	37	15.6	2	0.8	6	2.5	52	21.9	43	18.1
2002	187	8	4.3	20	10.7	24	12.8	20	10.7	0	0.0	1	0.5	6	3.2	45	24.1	4	2.1	5	2.7	34	18.2	20	10.7
2003	215	7	3.3	17	7.9	43	20.0	41	19.1	0	0.0	0	0.0	10	4.7	24	11.2	0	0.0	6	2.8	45	20.9	22	10.2
2004	193	7	3.6	23	11.9	36	18.7	29	15.0	0	0.0	0	0.0	6	3.1	15	7.8	8	4.1	8	4.1	38	19.7	23	11.9
2005	186	6	3.2	21	11.3	30	16.1	30	16.1	0	0.0	1	0.5	6	3.2	20	10.8	10	5.4	4	2.2	38	20.4	20	10.8
%	-22	-25		75		-23		-3		*		0		0		-46		400		-33		-27		-53	
Change																									

Misdemeanor Property																									
Year	Total No.	Asian Indian		Cambodian		Chinese		Filipino		Hawaiian		Japanese		Korean		Laotian		Pacific Islander		Samoan		Vietnamese		Other API	
		No.	%	No.	%	No.	%	No.	%	No.	%	No.	%	No.	%	No.	%	No.	%	No.	%	No.	%	No.	%
2001	120	8	6.7	4	3.3	25	20.8	16	13.3	0	0.0	1	0.8	4	3.3	4	3.3	0	0.0	1	0.8	25	20.8	32	26.7
2002	91	2	2.2	10	11.0	19	20.9	16	17.6	0	0.0	2	2.2	5	5.5	6	6.6	1	1.1	0	0.0	14	15.4	16	17.6
2003	75	3	4.0	3	4.0	25	33.3	13	17.3	0	0.0	0	0.0	1	1.3	3	4.0	0	0.0	6	8.0	14	18.7	7	9.3
2004	113	5	4.4	3	2.7	33	29.2	22	19.5	0	0.0	1	0.9	2	1.8	3	2.7	5	4.4	3	2.7	21	18.6	15	13.3
2005	64	5	7.8	0	0.0	10	15.6	16	25.0	0	0.0	2	3.1	2	3.1	1	1.6	1	1.6	3	4.7	14	21.9	10	15.6
%	-47	-38		-100		-60		0		*		100		-50		-75		*		200		-44		-69	
Change																									

Source: Alameda Juvenile Probation Department
 *Indivisible by zero, number is undefined

Overall, API property offenses declined from 2001 to 2005, as did figures across API ethnicities. The largest decline in felony property offenses occurred in 2002, after which felony property offenses increased the next year to almost the 2001 level, after then falling the next two years somewhat. API misdemeanor property offenses seem to be on a more clearly downward trend, as arrests declined in every year except for 2004. The only exceptions to the general decline are either from ethnicities with sample sizes too small for conclusiveness, and for Cambodian property felonies in which felonies rose from 2001 to 2002 and then leveled off. In 2005, Vietnamese were responsible for most of the felony property offenses (20%), followed by Chinese and Filipino (16%), Cambodian (11.3%), and Laotian and Other Asian (10.8%). Filipino were responsible for most of the misdemeanor property offenses in 2005 (25%), followed by Vietnamese (22%), and Cambodian and other API (16%).

B. Crimes Against Persons

TABLE 9
Alameda County
Juvenile Offenses Against Persons by API Ethnic Group
2001 – 2005

Felony Against Persons																									
Year	Total No.	Asian Indian		Cambodian		Chinese		Filipino		Hawaiian		Japanese		Korean		Laotian		Pacific Islander		Samoan		Vietnamese		Other API	
		No.	%	No.	%	No.	%	No.	%	No.	%	No.	%	No.	%	No.	%	No.	%	No.	%	No.	%	No.	%
2001	76	7	9.2	7	9.2	8	10.5	11	14.5	3	3.9	0	0.0	7	9.2	6	7.9	2	2.6	10	13.2	7	9.2	8	10.5
2002	69	7	10.1	4	5.8	9	13.0	16	23.2	1	1.4	0	0.0	1	1.4	1	1.4	1	1.4	16	23.2	7	10.1	6	8.7
2003	59	5	8.5	5	8.5	9	15.3	5	8.5	1	1.7	0	0.0	0	0.0	1	1.7	2	3.4	12	20.3	15	25.4	4	6.8
2004	54	5	9.3	3	5.6	9	16.7	12	22.2	0	0.0	0	0.0	2	3.7	1	1.9	6	11.1	5	9.3	8	14.8	3	5.6
2005	66	3	4.5	6	9.1	4	6.1	16	24.2	0	0.0	1	1.5	2	3.0	2	3.0	3	4.5	6	9.1	18	27.3	5	7.6
% Change	-13%	-57		-14		-50		45		-100		*		-71		-67		50		-40		157		-38	

Misdemeanors Against Persons																									
Year	Total No.	Asian Indian		Cambodian		Chinese		Filipino		Hawaiian		Japanese		Korean		Laotian		Pacific Islander		Samoan		Vietnamese		Other API	
		No.	%	No.	%	No.	%	No.	%	No.	%	No.	%	No.	%	No.	%	No.	%	No.	%	No.	%	No.	%
2001	62	8	12.9	5	8.1	12	19.4	9	14.5	2	3.2	1	1.6	3	4.8	2	3.2	0	0.0	4	6.5	6	9.7	10	16.1
2002	46	2	4.3	1	2.2	5	10.9	13	28.3	0	0.0	0	0.0	3	6.5	2	4.3	2	4.3	5	10.9	10	21.7	3	6.5
2003	57	5	8.8	4	7.0	10	17.5	9	15.8	1	1.8	3	5.3	2	3.5	3	5.3	1	1.8	4	7.0	8	14.0	7	12.3
2004	46	4	8.7	6	13.0	11	23.9	6	13.0	0	0.0	0	0.0	2	4.3	2	4.3	1	2.2	7	15.2	5	10.9	2	4.3
2005	44	10	22.7	3	6.8	4	9.1	6	13.6	0	0.0	0	0.0	2	4.5	2	4.5	0	0.0	5	11.4	6	13.6	6	13.6
% Change	-29	25		-40		-67		-33		-100		-100		-33		0		*		25		0		-40	

Source: Alameda Juvenile Probation Department
 *Indivisible by zero, number is undefined

Overall, API person offenses declined from 2001 to 2005. Felony person offenses declined in every year except for 2005, while person misdemeanor offenses fell in every year except for 2003. Figures across API ethnicities also showed a decline. However, the sample sizes for many API ethnicities are so small as to make any determination uncertain. In 2005, Filipino and Vietnamese youth were responsible for over one-half of all felony person arrests.

C. Drug Offenses

Table 10
Alameda County
Juvenile Drug Offenses by API Ethnic Group
2001 – 2005

Felony Drug																									
Year	Total No.	Asian Indian		Cambodian		Chinese		Filipino		Hawaiian		Japanese		Korean		Laotian		Pacific Islander		Samoan		Vietnamese		Other API	
		No.	%	No.	%	No.	%	No.	%	No.	%	No.	%	No.	%	No.	%	No.	%	No.	%	No.	%	No.	%
2001	35	1	2.9	4	11.4	4	11.4	5	14.3	0	0.0	0	0.0	1	2.9	3	8.6	0	0.0	0	0.0	15	42.9	2	5.7
2002	21	4	19.0	3	14.3	4	19.0	1	4.8	0	0.0	0	0.0	2	9.5	0	0.0	0	0.0	1	4.8	2	9.5	4	19.0
2003	28	1	3.6	3	10.7	5	17.9	6	21.4	0	0.0	1	3.6	1	3.6	0	0.0	0	0.0	1	3.6	6	21.4	4	14.3
2004	23	1	4.3	4	17.4	3	13.0	6	26.1	0	0.0	0	0.0	1	4.3	1	4.3	2	8.7	3	13.0	0	0.0	2	8.7
2005	26	4	15.4	3	11.5	8	30.8	0	0.0	0	0.0	0	0.0	3	11.5	2	7.7	1	3.8	1	3.8	4	15.4	0	0.0
% Change	-26	300		-25		100		-100		-		-		200		-33		-		-		-73		-100	

Misdemeanor Drug																									
Year	Total No.	Asian Indian		Cambodian		Chinese		Filipino		Hawaiian		Japanese		Korean		Laotian		Pacific Islander		Samoan		Vietnamese		Other API	
		No.	%	No.	%	No.	%	No.	%	No.	%	No.	%	No.	%	No.	%	No.	%	No.	%	No.	%	No.	%
2001	25	2	8.0	3	12.0	5	20.0	6	24.0	0	0.0	0	0.0	0	0.0	3	12.0	0	0.0	0	0.0	5	20.0	1	4.0
2002	35	1	2.9	3	8.6	9	25.7	11	31.4	0	0.0	0	0.0	2	5.7	0	0.0	1	2.9	3	8.6	3	8.6	2	5.7
2003	53	6	11.3	11	20.8	6	11.3	14	26.4	0	0.0	0	0.0	3	5.7	0	0.0	3	5.7	5	9.4	3	5.7	2	3.8
2004	65	8	12.3	4	6.2	10	15.4	11	16.9	0	0.0	1	1.5	4	6.2	5	7.7	2	3.1	4	6.2	10	15.4	6	9.2
2005	28	4	14.3	0	0.0	3	10.7	5	17.9	0	0.0	0	0.0	2	7.1	0	0.0	2	7.1	1	3.6	6	21.4	5	17.9
% Change	12	100		-100		-40		-17		-		-		-		-100		-		-		20		400	

Source: Alameda Juvenile Probation Department
 *Indivisible by zero, number is undefined

Overall, API felony drug offenses declined from 2001 to 2005 while misdemeanor drug offenses rose. The main drop in felony drug offenses occurred in 2002. Misdemeanor drug offenses fell dramatically in 2005, almost reversing the entire rise from 2001 to 2004. Once again, small sample sizes for API ethnicities make more detailed analyses inconclusive.

VI. Ethnic Representation of Arrest Rates

The disaggregation of API arrest rates illustrates how great the contrasts are within the API group. Samoan arrest rates are seven times that of the overall API arrest rates. Laotian arrest rates are 4 1/2 times higher and Cambodian, Vietnamese, Hawaiian arrest rates are around 2-3 times higher than the overall API arrest rate. By contrast, Japanese and Chinese arrest rates are one-half or less than that of the overall API rate. Asian Indian, Filipino, and Korean rates are slightly lower than the overall arrest rate.

Overall, APIs have lower arrest rates than the other ethnic groups, yet disaggregation shows how some API ethnic groups have higher arrest rates than some of their racial counterparts. Southeast Asians (Laotian, Cambodian, Vietnamese) have higher arrest rates than Hispanics and Whites, and Samoan arrest rates are similar to African-American arrest rates. African-Americans have the highest arrest rate at 162 (per 1000), followed by Samoans (153), Laotian (95), Hawaiian (67), Cambodian (56), and Vietnamese (49).

Table 11
Alameda County
Arrest Rates by Race and API Ethnic Group
2001

Ethnicity	Total # of Arrests in 2001	Population Youth 10 to 17	Rate per 1,000
American Indian	15	1,037	14.5
Asian Indian	63	3,686	17.1
Black	4,227	26,127	161.8
Cambodian	48	854	56.2
Chinese	124	10,088	12.3
Filipino	130	7,427	17.5
Hawaiian	8	119	67.2
Hispanic	1,709	39,047	43.8
Japanese	4	541	7.4
Korean	24	1,348	17.8
Laotian	77	808	95.3
Pacific Islander	8	938	8.5
Samoan	36	235	153.2
Vietnamese	158	3,201	49.4
White	1,814	45,120	40.2

Source: Alameda County Juvenile Probation Department; California Department of Finance; US Census, 2000

VII. Ethnic Representation in Arrests, Adjudications, and Institutional Placements

The proportion of API arrests (8%), adjudication (7%), and institutional placements (6%) relative to Alameda County's youth population is much less than their proportion in the population at 25%, in contrast to African-American who comprise only 16% of the population, yet comprise half of arrests and more than half of adjudications and institutional placements. Yet within API ethnic groups, some groups are under/over represented according to population. Chinese are one-third of the API population, yet they only comprise 14% of arrests and around 10% of adjudications and institutional placements. In contrast, Southeast Asians combined (Vietnamese, Laotian, Cambodian) are only around one-sixth of the API population, yet are around one-third of the arrests and nearly one-half of adjudications and institutional placements. Filipino and Vietnamese have the most number of arrests of all the API ethnic groups, comprising approximately 40% of the total API arrests.

While the API arrest rate is the lowest (2% of juvenile population) of all racial groups, the API adjudication rate (18% of arrests) is only lower than the African-American adjudication rate (22%) (see Table 12). The API institutional placement rate (24% of adjudications) is again lower than the other racial groups (Whites having the highest rate at 31%, followed by Blacks at 29% and Hispanics at 28%). Within the API racial group there is considerable variation of the arrest, adjudication, and institutional placement rates. Southeast Asian (Laotian, Vietnamese, Cambodian) and Samoan arrest and adjudication rates are far higher than the other API ethnicities; except for the Vietnamese rates. These rates exceed the White and Hispanic adjudication and arrest rates and also surpass the Black adjudication rate. The small sample sizes for adjudications may limit the reliability of the API institutional placement rates although there is suggestion of especially high institutional placement rates for Filipinos, Laotians, Pacific Islanders, and Asian Indians.

Table 12
Alameda County
Juveniles by Population, Arrests, Adjudications, and Placements
2005

Ethnicity	Juvenile Population		Arrests		Adjudications		Institutional Placements	
	Number	%	Number	% of Pop.	Number	% of Arrest	Number	% of Inst. Place.
American Indian	1,279	1	10	1	2	20	1	50
API	40,256	25	675	2	121	18	29	24
African-American	25,916	16	4,408	17	981	22	288	29
Hispanic	46,487	29	2,022	4	328	16	92	28
White	37,950	24	1,348	4	179	13	56	31
Other/Unknown	8,436	5	378	4	58	15	11	19
Total	160,324	100	8,841	6	1669	19	477	29

API Ethnic Groups	Juvenile Population*		Arrests		Adjudications		Institutional Placements	
	Number	%	Number	% of Pop.	Number	% of Arrest	Number	% of Inst. Place.
Chinese	10,088	33	95	1	13	14	3	23
Cambodian	854	3	49	6	16	33	0	0
Filipino	7,427	24	125	2	16	13	5	31
Japanese	541	2	7	1	1	14	0	0
Korean	1,348	4	24	2	2	8	0	0
Laotian	808	3	54	7	17	31	8	47
Pacific Islander	938	3	24	3	4	17	3	75
Samoan	235	1	40	17	9	23	1	11
Vietnamese	3,201	10	130	4	21	16	5	24
Asian Indian	3,686	12	48	1	9	19	3	33
Other Asian	1,796	6	79	4	13	16	1	8
Total	30,922	100	675	2	121	18	29	24

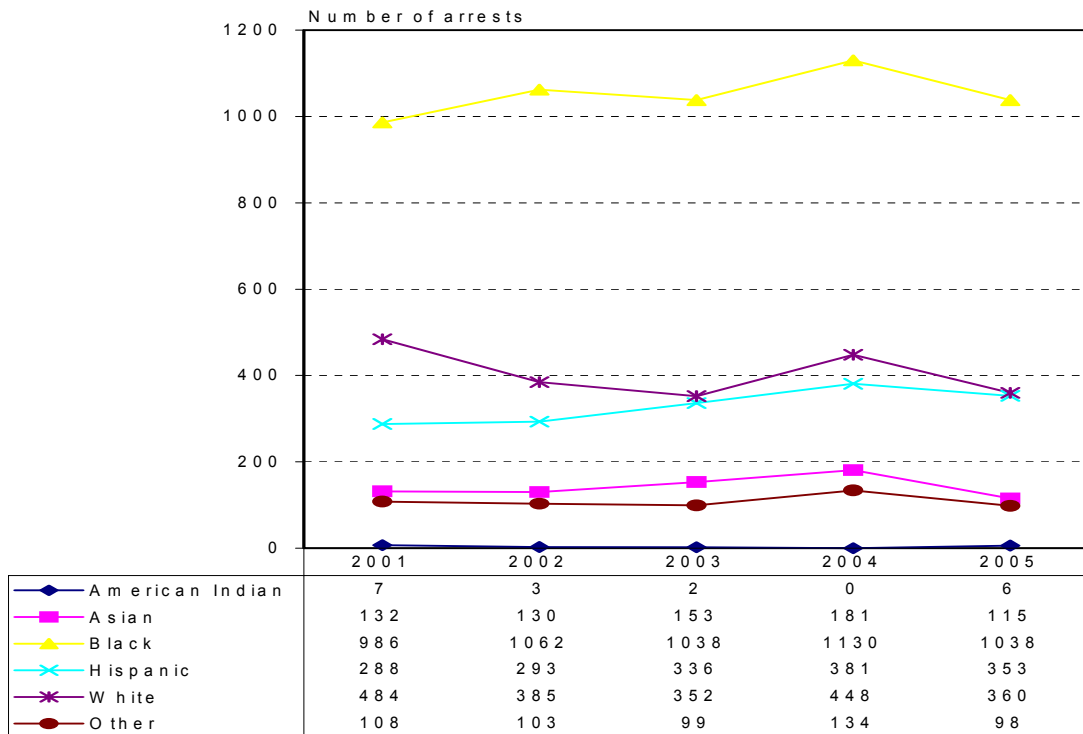
Source: Alameda County Juvenile Probation Department; California Department of Finance; US Census, 2000

*Juvenile population figures for Asian Ethnicities reflect 2000 US Census figures

VIII. API Female Arrests

Females comprised 22% of arrests in 2005 and 2001, compared with 10.5% in 1991. With the exception of a spike in 2004, overall female arrests remained fairly stable during this period. By racial group, however, a different picture emerged with female arrests generally declining for Whites while rising for the other racial groups. In 2004, after 4 years of a rising trend, female arrests for Asians and Hispanics actually reached levels close to their mid-1990s peaks, while Whites and Blacks were around 10% below their 1990s peak levels. Whites were the only group to decline from 2001-2004. In 2005, female arrests for each ethnicity were lower than the previous years, with Asian and White falling below their 2001 levels, Blacks falling to their level in 2003. Hispanics were the exception with their 2005 figures above their 2003 level. The decline in 2005 suggests that future years will have to be examined to determine if there is an upward trend in female arrests with 2005 being an anomaly, or whether the rise in female arrests continues. Blacks and Hispanics continue to comprise a greater percentage of the total, while Whites continue to comprise a lower percentage. Asians comprised 6%-8% in 2001-2005, which is about the same as their percentages in the mid- to late 1990s.

Figure 7
Alameda County
Female Juvenile Arrests by Ethnic Group
2001 – 2005



Source: Alameda County Juvenile Probation Department

Disaggregated by ethnicity, the trends were similar to the overall API trends. Most groups increased until 2004, and then declined in 2005, enough to negate the rising trend from 2001. For Chinese, Filipino, and Samoan females, the arrests in 2005 dropped to levels below that of 2001.

Figure 8A
Alameda County
Female Juvenile Arrests by Asian Ethnic Group
2001 – 2005

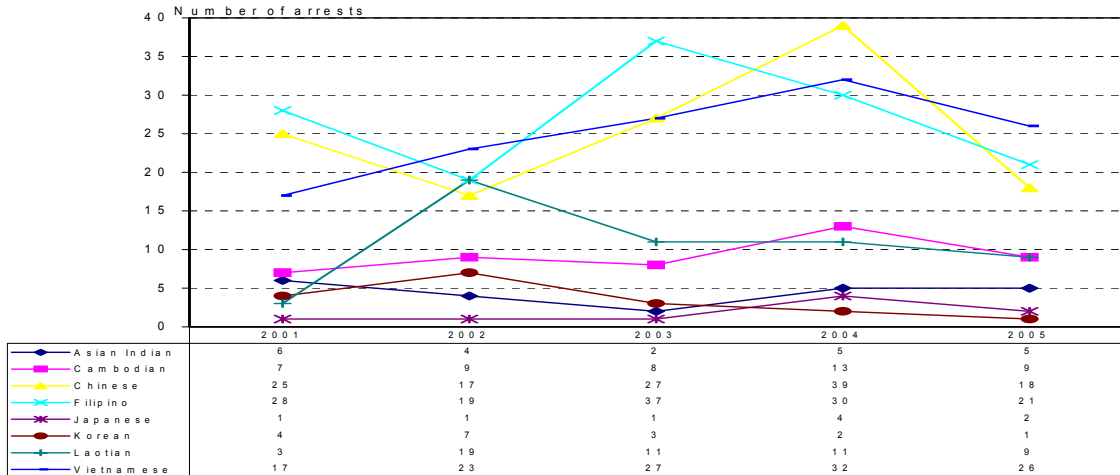
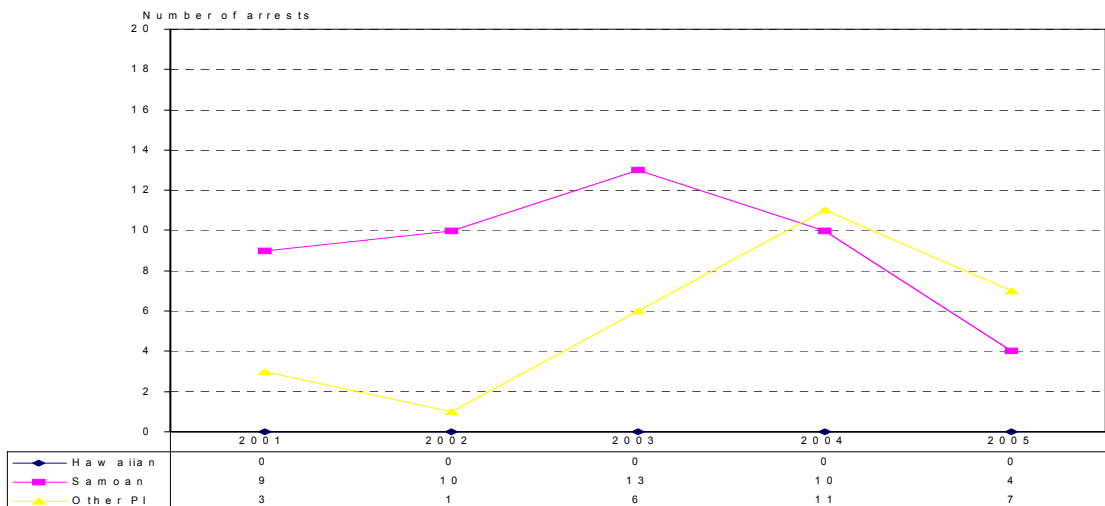


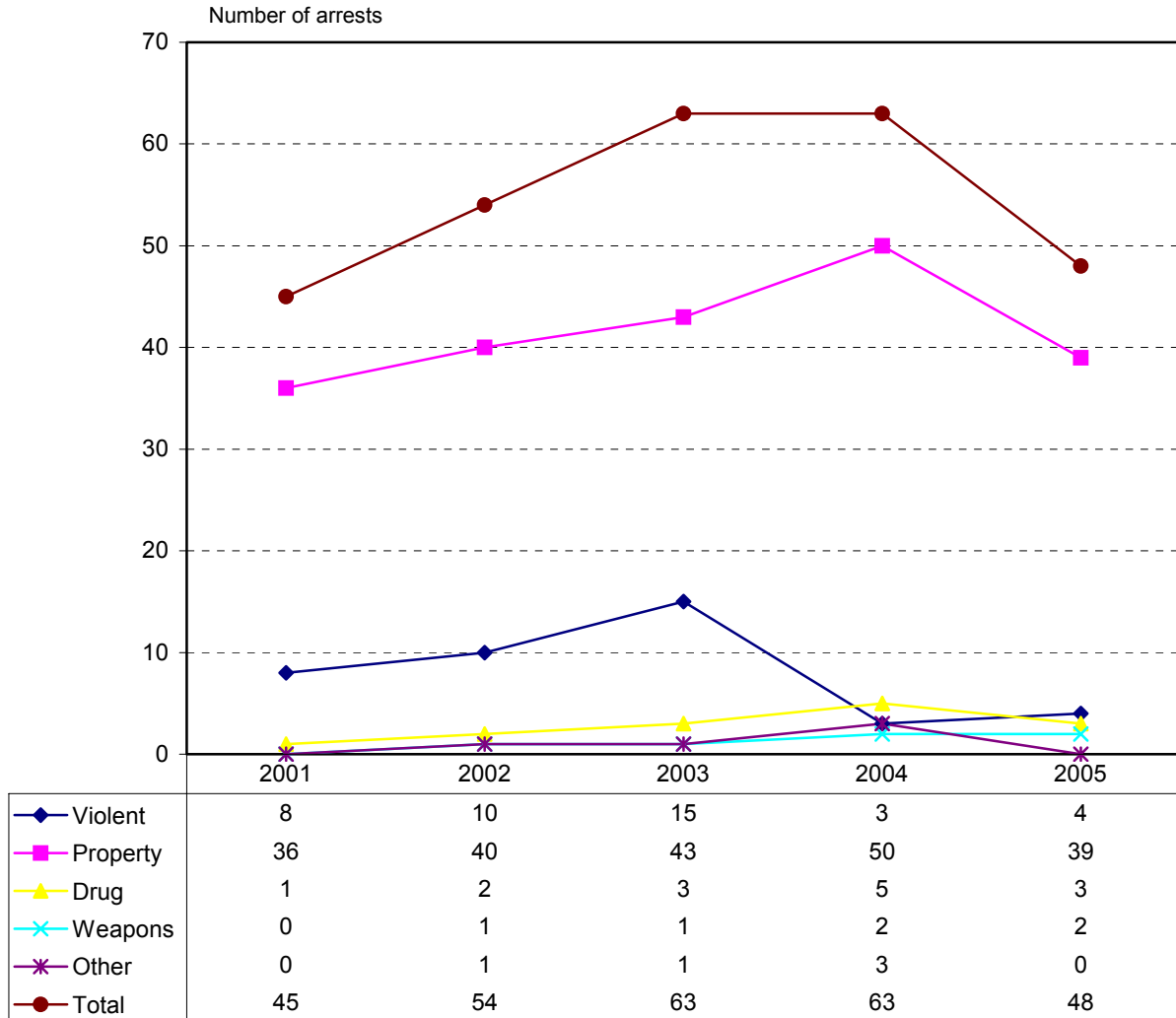
Figure 8B
Alameda County
Female Juvenile Arrests by Asian Ethnic Group
2001 – 2005



Source: Alameda County Juvenile Probation Department

The majority of API female juvenile felony arrests were property offenses, which rose from 2001-2004 and then declined in 2005. Vietnamese, Filipino, and Chinese juveniles were responsible for the majority of property offenses (around 2/3).

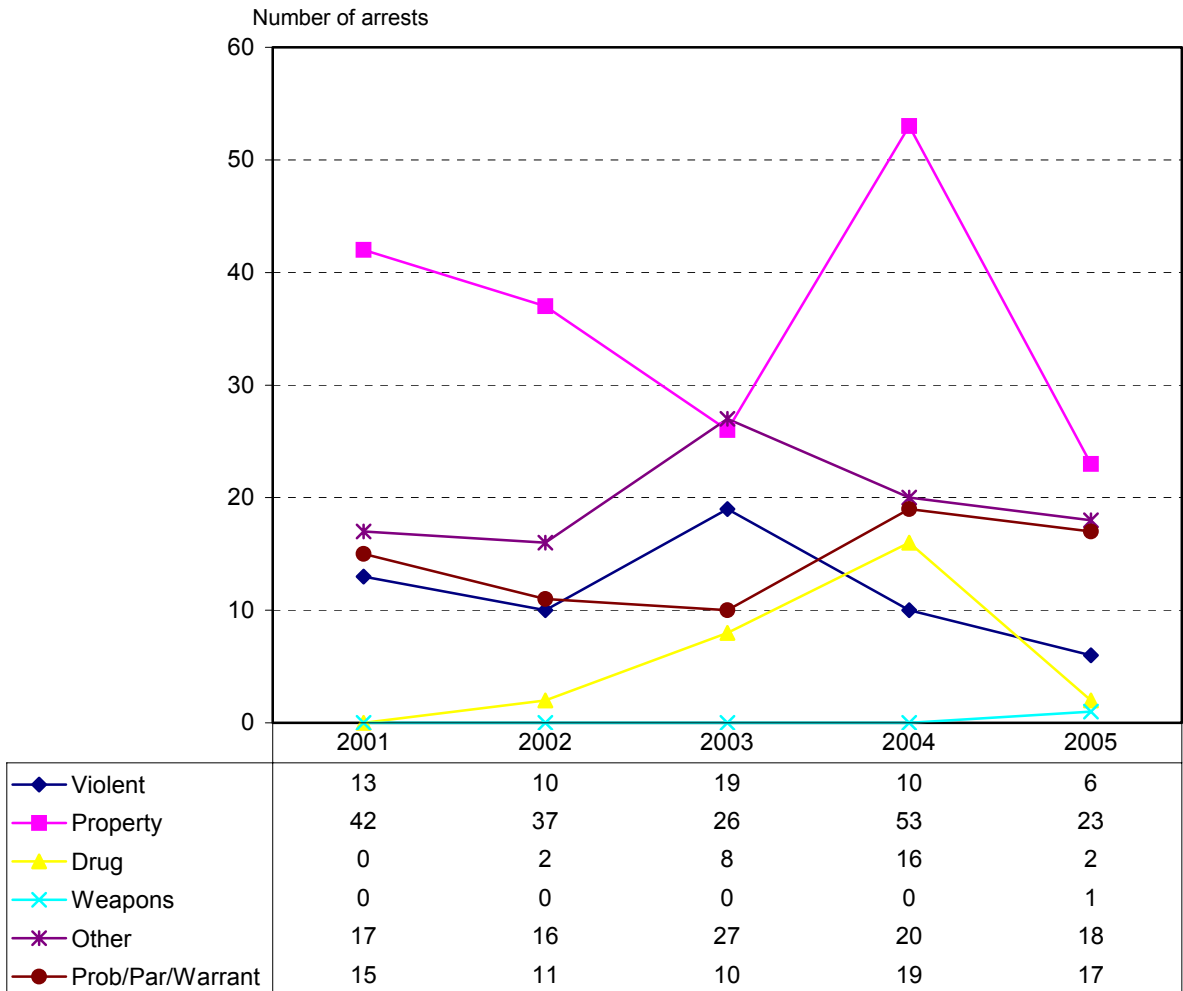
Figure 9
Alameda County
Female API Juvenile Felony Arrests by Offense Type
2001 – 2005



Source: Alameda County Juvenile Probation Department

The majority of API female juvenile misdemeanor arrests were property offenses, with the exception of 2003 in which other offenses were slightly more. Property offenses fell during this period, although the decline was interrupted in 2004 with an upward spike. Vietnamese, Filipino, and Chinese juveniles were responsible for the majority of property offenses (around 2/3).

Figure 10
Alameda County
Female API Juvenile Misdemeanor Arrests by Offense Type
2001 – 2005



Source: Alameda County Juvenile Probation Department

Table 13
Alameda County
Female Juvenile Property Offenses by API Ethnic Group
2001 – 2005

Felony Property																									
Year	Total No.	Asian Indian		Cambodian		Chinese		Filipino		Hawaiian		Japanese		Korean		Laotian		Pacific Islander		Samoan		Vietnamese		Other API	
		No.	%	No.	%	No.	%	No.	%	No.	%	No.	%	No.	%	No.	%	No.	%	No.	%	No.	%	No.	%
2001	36	2	5.6	2	5.6	10	27.8	4	11.1	0.0	0.0	1	2.8	1	2.8	0	0.0	1	2.8	6	16.7	9	25.0		
2002	40	1	2.5	6	15.0	2	5.0	4	10.0	0.0	0.0	2	5.0	11	27.5	0	0.0	2	5.0	8	20.0	4	10.0		
2003	43	1	2.3	3	7.0	6	14.0	9	20.9	0.0	0.0	2	4.7	4	9.3	0	0.0	2	4.7	10	23.3	6	14.0		
2004	50	1	2.0	4	8.0	10	20.0	7	14.0	0.0	0.0	1	2.0	4	8.0	3	6.0	2	4.0	11	22.0	7	14.0		
2005	39	2	5.1	1	2.6	7	17.9	7	17.9	0.0	0.0	0	0.0	4	10.3	5	12.8	0	0.0	12	30.8	1	2.6		
%	8	0						75		*	*			-100	300	*		-100		100					-89
Change				-50		-30																			

Misdemeanor Property																										
Year	Total No.	Asian Indian		Cambodian		Chinese		Filipino		Hawaiian		Japanese		Korean		Laotian		Pacific Islander		Samoan		Vietnamese		Other API		
		No.	%	No.	%	No.	%	No.	%	No.	%	No.	%	No.	%	No.	%	No.	%	No.	%	No.	%	No.	%	
2001	42	0	0.0	2	4.8	11	26.2	5	11.9	0.0	0.0	2	4.8	2	4.8	0	0.0	1	2.4	8	19.0	11	26.2			
2002	37	1	2.7	2	5.4	10	27.0	2	5.4	0.0	1	2.7	1	2.7	4	10.8	0	0.0	0	0.0	8	21.6	8	21.6		
2003	26	1	3.8	0	0.0	8	30.8	4	15.4	0.0	0	0.0	0	0.0	0	0.0	0	0.0	2	7.7	8	30.8	3	11.5		
2004	53	1	1.9	2	3.8	16	30.2	10	18.9	0.0	1	1.9	1	1.9	2	3.8	1	1.9	2	3.8	9	17.0	8	15.1		
2005	23	1	4.3	0	0.0	5	21.7	4	17.4	0.0	1	4.3	0	0.0	0	0.0	1	4.3	1	4.3	6	26.1	4	17.4		
%	-45	*		-100		-55		-20		*	*			-100	-100		*		0		-25				-64	
Change																										

Source: Alameda Juvenile Probation Department
*Indivisible by zero, number is undefined

Table 14
Alameda County
Female Juvenile Offenses Against Persons by API Ethnic Group
2001 – 2005

Felony Against Persons																									
Year	Total No.	Asian Indian		Cambodian		Chinese		Filipino		Hawaiian		Japanese		Korean		Laotian		Pacific Islander		Samoan		Vietnamese		Other API	
		No.	%	No.	%	No.	%	No.	%	No.	%	No.	%	No.	%	No.	%	No.	%	No.	%	No.	%	No.	%
2001	8	0	0.0	0	0.0	1	12.5	3	37.5	0	0.0	0	0.0	1	12.5	0	0.0	0	0.0	2	25.0	0	0.0	1	12.5
2002	10	0	0.0	0	0.0	0	0.0	1	10.0	0	0.0	0	0.0	0	0.0	0	0.0	0	0.0	4	40.0	2	20.0	3	30.0
2003	15	0	0.0	1	6.7	3	20.0	2	13.3	0	0.0	0	0.0	0	0.0	1	6.7	1	6.7	2	13.3	5	33.3	0	0.0
2004	3	1	33.3	0	0.0	1	33.3	1	33.3	0	0.0	0	0.0	0	0.0	0	0.0	0	0.0	0	0.0	0	0.0	0	0.0
2005	4	0	0.0	0	0.0	0	0.0	1	25.0	0	0.0	1	25.0	0	0.0	0	0.0	0	0.0	0	0.0	2	50.0	0	0.0
% Change	-50	*		*		-100		-67		*		*		-100		*		*		-100		*			-100

Misdemeanor Against Persons																									
Year	Total No.	Asian Indian		Cambodian		Chinese		Filipino		Hawaiian		Japanese		Korean		Laotian		Pacific Islander		Samoan		Vietnamese		Other API	
		No.	%	No.	%	No.	%	No.	%	No.	%	No.	%	No.	%	No.	%	No.	%	No.	%	No.	%	No.	%
2001	13	2	15.4	1	7.7	0	0.0	3	23.1	0	0.0	1	7.7	0	0.0	0	0.0	0	0.0	2	15.4	1	7.7	3	23.1
2002	10	0	0.0	0	0.0	1	10.0	5	50.0	0	0.0	0	0.0	1	10.0	0	0.0	1	10.0	0	0.0	2	20.0	0	0.0
2003	19	0	0.0	0	0.0	3	15.8	4	21.1	0	0.0	1	5.3	1	5.3	2	10.5	1	5.3	3	15.8	1	5.3	3	15.8
2004	10	0	0.0	1	10.0	3	30.0	3	30.0	0	0.0	0	0.0	0	0.0	0	0.0	0	0.0	1	10.0	0	0.0	2	20.0
2005	6	2	33.3	0	0.0	0	0.0	1	16.7	0	0.0	0	0.0	1	16.7	0	0.0	0	0.0	1	16.7	1	16.7	0	0.0
% Change	-54	0		-100		*		-67		*		-100		*		*		*		-50		0			-100

Source: Alameda Juvenile Probation Department
*Indivisible by zero, number is undefined

Table 15
Alameda County
Female Juvenile Drug Offenses by API Ethnic Group
2001 – 2005

Felony Drug																									
Year	Total No.	Asian Indian		Cambodian		Chinese		Filipino		Hawaiian		Japanese		Korean		Laotian		Pacific Islander		Samoan		Vietnamese		Other API	
		No.	%	No.	%	No.	%	No.	%	No.	%	No.	%	No.	%	No.	%	No.	%	No.	%	No.	%	No.	%
2001	1	0	0.0	0	0.0	0	0.0	1	100	0.0	0.0	0.0	0.0	0.0	0.0	0	0.0	0	0.0	0	0.0	0	0.0	0	0.0
2002	2	1	50.0	0	0.0	0	0.0	0	0.0	0.0	0.0	0.0	0.0	0.0	0.0	0	0.0	1	50.0	0.0	0.0	0	0.0	0	0.0
2003	3	0	0.0	0	0.0	0	0.0	1	33.3	0.0	0.0	0.0	0.0	0.0	0.0	0	0.0	0	0.0	0	0.0	0	0.0	2	66.7
2004	5	0	0.0	0	0.0	1	20.0	0	0.0	0.0	0.0	0.0	0.0	0.0	0.0	2	40.0	2	40.0	0.0	0.0	0	0.0	0	0.0
2005	3	0	0.0	1	33.3	1	33.3	0	0.0	0.0	0.0	0.0	0.0	0.0	0.0	0	0.0	1	33.3	0.0	0.0	0	0.0	0	0.0
% Change	200	*		*		*		-100		*		*		*		*		*		*		*		*	

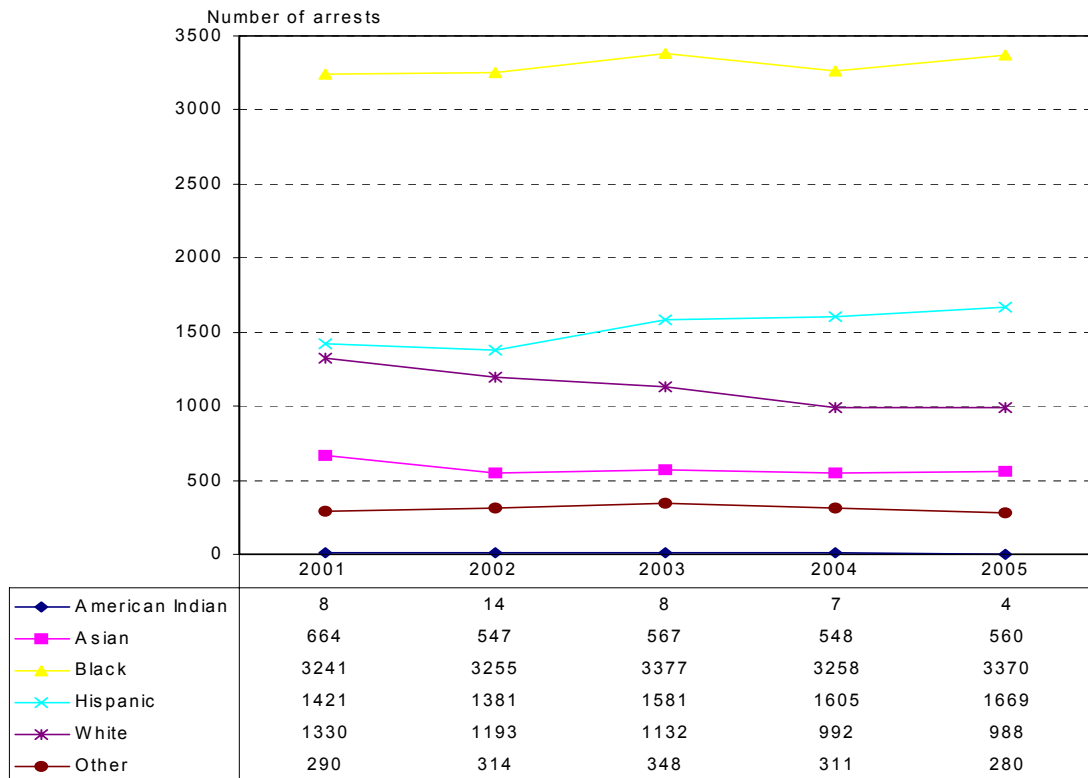
Misdemeanor Drug																									
Year	Total No.	Asian Indian		Cambodian		Chinese		Filipino		Hawaiian		Japanese		Korean		Laotian		Pacific Islander		Samoan		Vietnamese		Other API	
		No.	%	No.	%	No.	%	No.	%	No.	%	No.	%	No.	%	No.	%	No.	%	No.	%	No.	%	No.	%
2001	0	0	*	0	*	0	*	0	*	0	*	0	*	0	*	0	*	0	*	0	*	0	*	0	*
2002	2	0	0.0	1	2	0	0.0	1	50.0	0	0.0	0	0.0	0.0	0.0	0	0.0	1	50.0	0	0.0	0	0.0	0	0.0
2003	8	0	0.0	3	8	0	0.0	3	37.5	0	0.0	2	25.0	0.0	0.0	0	0.0	0	0.0	0	0.0	2	25.0	1	12.5
2004	16	2	12.5	1	16	2	12.5	1	6.3	2	12.5	1	6.3	0.0	0.0	0	0.0	4	25.0	1	6.3	1	6.3	1	6.3
2005	2	0	0.0	0	2	0	0.0	0	0.0	1	50.0	0	0.0	0.0	0.0	0	0.0	0	0.0	0	0.0	1	50.0	0	0.0
% Change	*	*		*		*		*		*		*		*		*		*		*		*		*	

Source: Alameda Juvenile Probation Department
*Indivisible by zero, number is undefined

IX. API Male Arrests

Overall male arrests did not change much during this period. Male arrests as a percentage of total declined from 89% in 1991 to 78% in 2001 and 2004. Black and Hispanic male arrests as a percentage of total have increased slightly in the 2001-2005 period (from 47% to 49%, and from 20% to 24%), while Whites have declined from 19% to 14% and Asians have declined from 10% to 8%. White male arrests have been declining, whereas Hispanic male arrests have been increasing. Asian male arrests have not changed much since 2002, and total Black male arrests have fluctuated during this period. All groups are down from their peaks in the mid-1990s.

Figure 11
Alameda County
Male Juvenile Arrests by Ethnic Group
2001 – 2005



Source: Alameda County Juvenile Probation Department

There are no clear trends evident in most API categories for male arrests. While most offense categories for males are down from the 1990s peak, the 2001-2005 period is fairly ambiguous, with many fluctuations.

Figure 12A
Alameda County
Male Juvenile Arrests by Asian Ethnic Group
2001 – 2005

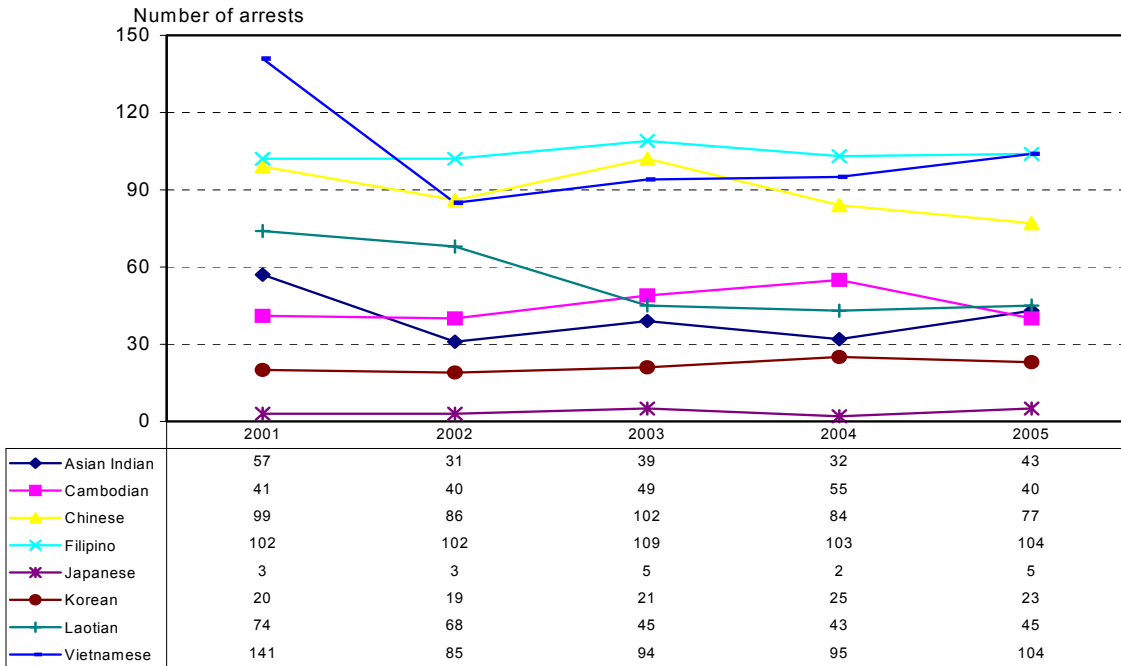
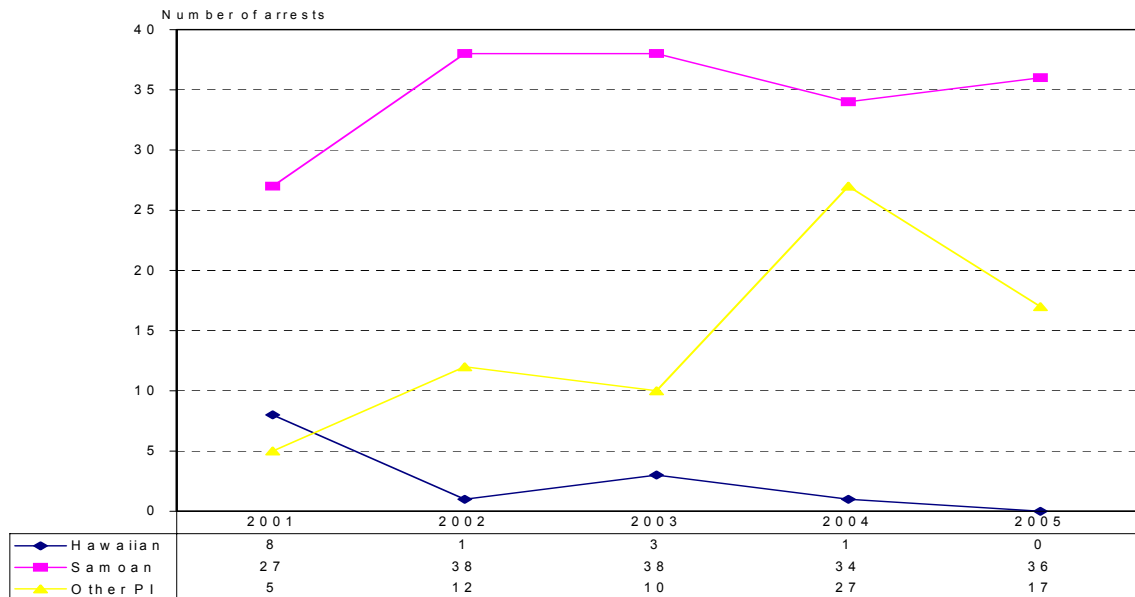
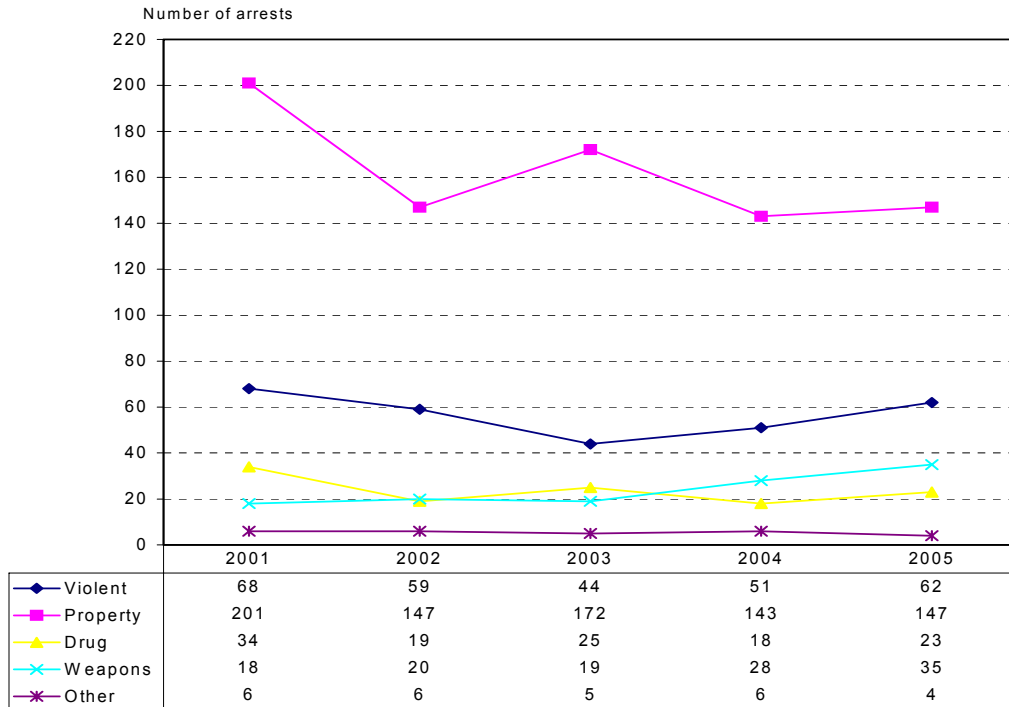


Figure 12B
Alameda County
Male Juvenile Arrests by Asian Ethnic Group
2001 – 2005



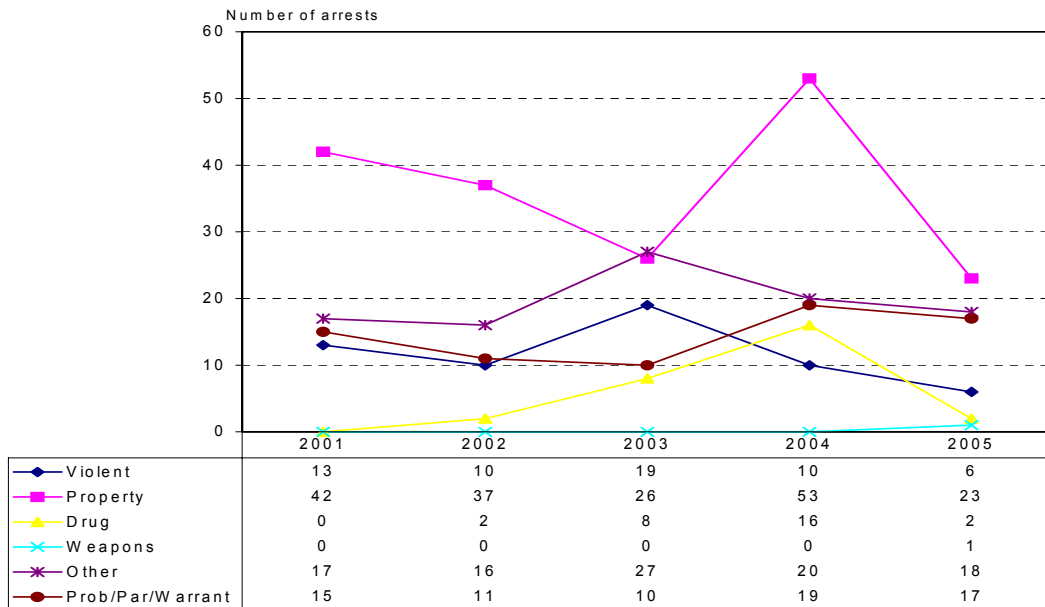
Source: Alameda County Juvenile Probation Department

Figure 13
Alameda County
Male Asian/Pacific Islander Juvenile Felony Arrests by Offense Type
2001 – 2005



Source: Alameda County Juvenile Probation Department

Figure 14
Alameda County
Male Asian/Pacific Islander Juvenile Misdemeanor Arrests by Offense Type
2001 – 2005



Source: Alameda County Juvenile Probation Department

Table 16
Alameda County
Male Juvenile Property Offenses by API Ethnic Group
2001 – 2005

Felony Property																									
Year	Total No.	Asian Indian		Cambodian		Chinese		Filipino		Hawaiian		Japanese		Korean		Laotian		Pacific Islander		Samoan		Vietnamese		Other API	
		No.	%	No.	%	No.	%	No.	%	No.	%	No.	%	No.	%	No.	%	No.	%	No.	%	No.	%	No.	%
2001	201	6	3.0	10	5.0	29	14.4	27	13.4	0.0	1	0.5	5	2.5	36	17.9	2	1.0	5	2.5	46	22.9	34	16.9	
2002	147	7	4.8	14	9.5	22	15.0	16	10.9	0.0	1	0.7	4	2.7	34	23.1	4	2.7	3	2.0	26	17.7	16	10.9	
2003	172	6	3.5	14	8.1	37	21.5	32	18.6	0.0	0	0.0	8	4.7	20	11.6	0	0.0	4	2.3	35	20.3	16	9.3	
2004	143	6	4.2	19	13.3	26	18.2	22	15.4	0.0	0	0.0	5	3.5	11	7.7	5	3.5	6	4.2	27	18.9	16	11.2	
2005	147	4	2.7	20	13.6	23	15.6	23	15.6	0.0	1	0.7	6	4.1	16	10.9	5	3.4	4	2.7	26	17.7	19	12.9	
%	-27	-33		100		-21		-15		*		0	20		-56		150		-20		-43		-44		
Change																									

Misdemeanor Property																									
Year	Total No.	Asian Indian		Cambodian		Chinese		Filipino		Hawaiian		Japanese		Korean		Laotian		Pacific Islander		Samoan		Vietnamese		Other API	
		No.	%	No.	%	No.	%	No.	%	No.	%	No.	%	No.	%	No.	%	No.	%	No.	%	No.	%	No.	%
2001	78	8	10.3	2	2.6	14	17.9	11	14.1	0.0	1	1.3	2	2.6	2	2.6	0	0.0	0	0.0	17	21.8	21	26.9	
2002	54	1	1.9	8	14.8	9	16.7	14	25.9	0.0	1	1.9	4	7.4	2	3.7	1	1.9	0	0.0	6	11.1	8	14.8	
2003	49	2	4.1	3	6.1	17	34.7	9	18.4	0.0	0	0.0	1	2.0	3	6.1	0	0.0	4	8.2	6	12.2	4	8.2	
2004	60	4	6.7	1	1.7	17	28.3	12	20.0	0.0	0	0.0	1	1.7	1	1.7	4	6.7	1	1.7	12	20.0	7	11.7	
2005	41	4	9.8	0	0.0	5	12.2	12	29.3	0.0	1	2.4	2	4.9	1	2.4	0	0.0	2	4.9	8	19.5	6	14.6	
%	-47	-50		-100		-64		9		*	0	0	0		-50		*		*		-53		-71		
Change																									

Source: Alameda Juvenile Probation Department
*Indivisible by zero, number is undefined

Table 17
Alameda County
Male Juvenile Offenses Against Persons by API Ethnic Group
2001 – 2005

Felony Against Persons																										
Year	Total No.	Asian Indian		Cambodian		Chinese		Filipino		Hawaiian		Japanese		Korean		Laotian		Pacific Islander		Samoan		Vietnamese		Other API		
		No.	%	No.	%	No.	%	No.	%	No.	%	No.	%	No.	%	No.	%	No.	%	No.	%	No.	%	No.	%	
2001	68	7	10.3	7	10.3	7	10.3	8	11.8	3	4.4	0.0	6	8.8	6	8.8	2	2.9	8	11.8	7	10.3	7	10.3	7	10.3
2002	59	7	11.9	4	6.8	9	15.3	15	25.4	1	1.7	0.0	1	1.7	1	1.7	1	1.7	12	20.3	5	8.5	3	5.1	3	5.1
2003	44	5	11.4	4	9.1	6	13.6	3	6.8	1	2.3	0.0	0	0.0	0	0.0	1	2.3	10	22.7	10	22.7	4	9.1	4	9.1
2004	51	4	7.8	3	5.9	8	15.7	11	21.6	0	0.0	0.0	2	3.9	1	2.0	6	11.8	5	9.8	8	15.7	3	5.9	3	5.9
2005	62	3	4.8	6	9.7	4	6.5	15	24.2	0	0.0	0.0	2	3.2	2	3.2	3	4.8	6	9.7	16	25.8	5	8.1	5	8.1
%	-9	-57		-14		-43		88		-100		*	-67		-67		50		-25		129		-29		-29	
Change																										

Misdemeanor Against Persons																										
Year	Total No.	Asian Indian		Cambodian		Chinese		Filipino		Hawaiian		Japanese		Korean		Laotian		Pacific Islander		Samoan		Vietnamese		Other API		
		No.	%	No.	%	No.	%	No.	%	No.	%	No.	%	No.	%	No.	%	No.	%	No.	%	No.	%	No.	%	
2001	49	6	12.2	4	8.2	12	24.5	6	12.2	2	4.1	0	0.0	3	6.1	2	4.1	0	0.0	2	4.1	5	10.2	7	14.3	
2002	36	2	5.6	1	2.8	4	11.1	8	22.2	0	0.0	0	0.0	2	5.6	2	5.6	1	2.8	5	13.9	8	22.2	3	8.3	
2003	38	5	13.2	4	10.5	7	18.4	5	13.2	1	2.6	2	5.3	1	2.6	1	2.6	0	0.0	1	2.6	7	18.4	4	10.5	
2004	36	4	11.1	5	13.9	8	22.2	3	8.3	0	0.0	0	0.0	2	5.6	2	5.6	1	2.8	6	16.7	5	13.9	0	0.0	
2005	38	8	21.1	3	7.9	4	10.5	5	13.2	0	0.0	0	0.0	1	2.6	2	5.3	0	0.0	4	10.5	5	13.2	6	15.8	
%	-22	33		-25		-67		-17		-100		*	-67		0		0		*		100		0		-14	
Change																										

Source: Alameda Juvenile Probation Department
*Indivisible by zero, number is undefined

Table 18
Alameda County
Male Juvenile Drug Offenses by API Ethnic Group
2001 – 2005

Felony Drug																										
Year	Total No.	Asian Indian		Cambodian		Chinese		Filipino		Hawaiian		Japanese		Korean		Laotian		Pacific Islander		Samoan		Vietnamese		Other API		
		No.	%	No.	%	No.	%	No.	%	No.	%	No.	%	No.	%	No.	%	No.	%	No.	%	No.	%	No.	%	
2001	34	1	2.9	4	11.8	4	11.8	4	11.8	0.0	0	0.0	1	2.9	3	8.8	0	0.0	0	0.0	0	0.0	15	44.1	2	5.9
2002	19	3	15.8	3	15.8	4	21.1	1	5.3	0.0	0	0.0	2	10.5	0	0.0	0	0.0	0	0.0	0	0.0	2	10.5	4	21.1
2003	25	1	4.0	3	12.0	5	20.0	5	20.0	0.0	1	4.0	1	4.0	0	0.0	0	0.0	1	4.0	6	24.0	2	8.0		
2004	18	1	5.6	4	22.2	2	11.1	6	33.3	0.0	0	0.0	1	5.6	1	5.6	0	0.0	1	5.6	0	0.0	0	0.0	2	11.1
2005	23	4	17.4	2	8.7	7	30.4	0	0.0	0.0	0	0.0	3	13.0	2	8.7	1	4.3	0	0.0	4	17.4	0	0.0		
% Change	-32	300		-50		75		-100		*	*		200		-33		*	*			-73					-100

Misdemeanor Drug																										
Year	Total No.	Asian Indian		Cambodian		Chinese		Filipino		Hawaiian		Japanese		Korean		Laotian		Pacific Islander		Samoan		Vietnamese		Other API		
		No.	%	No.	%	No.	%	No.	%	No.	%	No.	%	No.	%	No.	%	No.	%	No.	%	No.	%	No.	%	
2001	25	2	8.0	3	12.0	5	20.0	6	24.0	0.0	0	0.0	0	0.0	3	12.0	0	0.0	0	0.0	5	20.0	1	4.0		
2002	33	1	3.0	2	6.1	9	27.3	11	33.3	0.0	0	0.0	1	3.0	0	0.0	1	3.0	3	9.1	3	9.1	3	9.1	2	6.1
2003	45	6	13.3	8	17.8	6	13.3	12	26.7	0.0	0	0.0	3	6.7	0	0.0	1	2.2	4	8.9	3	6.7	2	4.4		
2004	49	6	12.2	3	6.1	8	16.3	10	20.4	0.0	1	2.0	4	8.2	1	2.0	1	2.0	3	6.1	7	14.3	5	10.2		
2005	26	4	15.4	0	0.0	2	7.7	5	19.2	0.0	0	0.0	2	7.7	0	0.0	1	3.8	1	3.8	6	23.1	5	19.2		
% Change	4%	100		-100		-60		-17		*	*		*		-100		*	*			20					400

Source: Alameda Juvenile Probation Department
*Indivisible by zero, number is undefined

X. API Recidivism

Recidivism rates are shown for 2004 for APIs. Eighteen percent of API youth were arrested again in 6 months, 24% were re-arrested in 12 months, and by 24 months, 30% had been re-arrested. Recidivism rates varied by API ethnicity. Cambodian and Pacific Islanders tend to have the highest recidivism rates, while Chinese had the lowest. After two years, the Southeast Asian groups (Cambodian, Laotian, Vietnamese) recidivated from around 30% to close to 50%, considerably higher than Koreans, Japanese, and Chinese, which re-offend at around a 17% rate. Results show that more than one-half of Pacific Islanders re-offend within two years, yet this result may be exaggerated by small sample size. Recidivism rates among males are close to double that of females. Felony drug offenders and warrant/probation violators tend to have the highest recidivism rates out of all offense categories.

Table 19
Alameda County
6-Month, 12-Month, and 24-Month Recidivism
Asian Pacific Islander Juvenile Arrest Population
2004

	6 Months % Reoffended	12 Months % Reoffended	24 Months % Reoffended
Total API	18%	24%	30%
Ethnicity			
Asian Indian	15%	24%	27%
Cambodian	29%	35%	38%
Chinese	10%	16%	20%
Filipino	20%	29%	33%
Hawaiian	0%	0%	0%
Japanese	17%	17%	17%
Korean	17%	17%	17%
Laotian	26%	35%	47%
Other Asian	19%	22%	26%
Pacific Islander	48%	48%	57%
Samoan	11%	16%	32%
Vietnamese	14%	21%	29%
Sex			
Female	11%	15%	19%
Male	21%	28%	35%
Original Charge Type			
Felony Person	12%	20%	22%
Felony Property	19%	27%	31%
Felony Drug	36%	36%	43%
Felony Weapons	0%	0%	11%
Felony Other	0%	0%	0%
Misdemeanor Person	20%	24%	29%
Misd. Property	9%	13%	17%
Misd. Drug	14%	19%	22%
Misd. Weapons	33%	33%	33%
Misd. Other	19%	28%	37%
Misd. Warrant	41%	41%	47%
Misd. Prob/Parole	48%	63%	81%

Source: Alameda Juvenile Probation Department

Table 20
Alameda County
6-Month Recidivism by Offense Type for
Asian Pacific Islander Juvenile Arrest Population
2004

		Felony % Reoffended	Misdemeanor % Reoffended	Prob Viol/Warr % Reoffended
Total API	Total	8%	6%	4%
API	Chinese	4%	6%	1%
Ethnicity	Cambodian	15%	8%	6%
	Filipino	7%	8%	5%
	Japanese	0%	17%	0%
	Korean	6%	6%	6%
	Laotian	3%	6%	18%
	Pacific Islander	33%	5%	10%
	Samoan	5%	5%	0%
	Hawaiian	0%	0%	0%
	Vietnamese	5%	5%	3%
	Asian Indian	6%	6%	3%
	Other Asian	11%	4%	4%
Gender	Female	3%	4%	4%
	Male	9%	7%	5%

Source: Alameda Juvenile Probation Department

XI. Conclusion

During the 2001-2005 period, there was an overall leveling off for Alameda County arrests, especially compared with the prior decade in which arrests were rising until the mid-1990s, and then declined until 2001. Yet similar to the 1990s, there was variability in trends by racial group. The African-American arrest rate rose during this four year period, although the total number of arrests only increased for the first few years. Hispanic arrest rates did not change much, although the total number of arrests rose. White arrest rates and total arrests fell during this period. API arrest rates fell during this period, while total arrests fluctuated.

For Alameda County, API arrest rates are far lower than that of the other ethnic groups. The proportion of total arrests, adjudications, and institutional placements that are API is much lower than the corresponding API proportion of the population. However, as was also shown in the previous decade (see Le et al., 2001), the under-representation of API youth in the juvenile justice system conceals the variation in juvenile justice involvement among different API ethnic groups. During this time period, Japanese and Chinese youth had arrest rates less than half of the overall API rate; in contrast, Southeast Asians (Laotian, Cambodian, Vietnamese) had higher arrest rates than Hispanics and Whites, and Samoan arrest rates were similar to those of African-Americans. Further, two years after their first arrest, the Southeast Asian groups (Cambodian, Laotian, Vietnamese) had recidivism rates at least twice that of Koreans, Japanese, and Chinese.

Males and females also show different arrest patterns. Since the 1990s, female arrests have been rising, and this trend continues to 2004. In 2005, there was a drop in female arrests overall but still much higher than the previous decade. The percentage of female arrests in Alameda County went from 11% of total arrests in 1991 to 25% in 2004, after falling to 22% in 2005. Whites were the only ethnic group in which female arrests declined during the entire 2001-2005 period. Hispanic females experienced the highest number of arrests during this period. On the other hand, there was a less clear discernible pattern for males. Male arrests in Alameda County fluctuated during this period, with Hispanic males being the only ethnic group to show clear increases during this period.

XII. References

Agin, R. L., Colleen F., Sterling, S., & Basu., A. (1992). *Guide to the Pronunciation of Asian Pacific Names*. Hayward, CA: Asian American Educators' Council. California State University

Le, T., Arifuku, I., Louie, C., Krisberg, M., & Tang, E. (2001). *Not Invisible: Asian Pacific Islander Juvenile Arrests in Alameda County*. Oakland, CA: NCCD & API Youth Violence Prevention Center.

Louie, E.W. (1998). *Chinese American Names: Tradition and Transition*. Jefferson, N.C.: McFarland Publications.

Snyder, H. N. (2005). *Juvenile Arrests 2003*. OJJDP Juvenile Justice Bulletin. Washington, DC: U.S. Department of Justice.

Internet sources for Asian names:

<http://surnamesearch.com>

http://bachhong-truongdinh.tripod.com/HCM_city/id1.html

<http://www.geocities.com/Heartland/Acres/4307/lastname.html>

http://www.surnames.com/databases/Country_Select.asp

<http://www.flickr.com/onomastikon/Orient/Indochina/Cambodia.html>